

SETD5 Rabbit Polyclonal Antibody



CAB7304

Product Information

Size:

20uL, 50uL, 100uL, 200uL

Observed MW:

158kDa

Calculated MW:

145kDa/147kDa/157kDa

Applications:

WB IHC IF

Reactivity:

Human, Mouse, Rat

Protein Background

This function of this gene has yet to be determined but mutations in this gene have been associated with autosomal dominant mental retardation-23. Alternative splicing results in multiple transcript variants encoding different isoforms.

Immunogen information

Gene ID:

55209

Uniprot

Q9C0A6

Synonyms:

SETD5

Antibody Information

Recommended dilutions:

WB 1:500 - 1:2000 IHC 1:50
- 1:200 IF 1:50 - 1:100

Source:

Rabbit

Isotype:

IgG

Purification:

Affinity purification

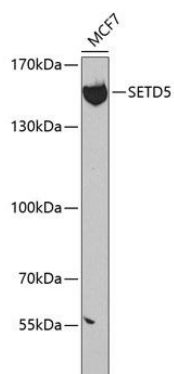
Immunogen:

Recombinant fusion protein containing a sequence corresponding to amino acids 520-740 of human SETD5 (NP_001073986.1).

Storage:

Store at -20°C. Avoid freeze / thaw cycles. Buffer: PBS with 0.02% sodium azide, 50% glycerol, pH7.3.

Product Images



Western blot analysis of extracts of MCF-7 cells, using SETD5 antibody (CAB7304) at 1:300 dilution. Secondary antibody: HRP Goat Anti-Rabbit IgG (H+L) (CABS014) at 1:10000 dilution. Lysates/proteins: 25ug per lane. Blocking buffer: 3% nonfat dry milk in TBST. Detection: ECL Basic Kit (CABM00020). Exposure time: 90s.