

SMYD3 Rabbit Polyclonal Antibody



CAB7309

Product Information

Size:

20uL, 50uL, 100uL, 200uL

Observed MW:

49kDa

Calculated MW:

29kDa/42kDa/49kDa

Applications:

WB IF

Reactivity:

Human, Mouse

Protein Background

This gene encodes a histone methyltransferase which functions in RNA polymerase II complexes by an interaction with a specific RNA helicase. Multiple transcript variants encoding different isoforms have been found for this gene.

Immunogen information

Gene ID:

64754

Uniprot

Q9H7B4

Synonyms:

SMYD3; KMT3E; ZMYND1; ZNFN3A1; bA74P14.1

Antibody Information

Recommended dilutions:

WB 1:500 - 1:2000 IF 1:50 - 1:100

Source:

Rabbit

Isotype:

IgG

Purification:

Affinity purification

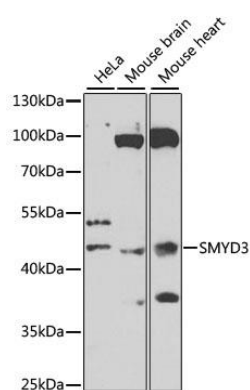
Immunogen:

Recombinant fusion protein containing a sequence corresponding to amino acids 140-369 of human SMYD3 (NP_073580.1).

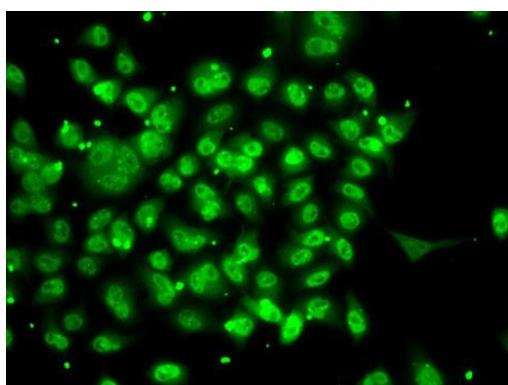
Storage:

Store at -20°C. Avoid freeze / thaw cycles. Buffer: PBS with 0.02% sodium azide, 50% glycerol, pH7.3.

Product Images



Western blot analysis of extracts of various cell lines, using SMYD3 antibody (CAB7309) at 1:1000 dilution. Secondary antibody: HRP Goat Anti-Rabbit IgG (H+L) (CABS014) at 1:10000 dilution. Lysates/proteins: 25ug per lane. Blocking buffer: 3% nonfat dry milk in TBST. Detection: ECL Basic Kit (CABM00020). Exposure time: 60s.



Immunofluorescence analysis of A-549 cells using SMYD3 antibody (CAB7309).