

# TMLHE Rabbit Polyclonal Antibody



CAB7312

## Product Information

### Size:

20uL, 50uL, 100uL, 200uL

### Observed MW:

### Calculated MW:

38kDa/41kDa/42kDa/44kDa/  
46kDa/49kDa/50kDa

### Applications:

IF

### Reactivity:

Human

## Antibody Information

### Recommended dilutions:

IF 1:50 - 1:100

### Source:

Rabbit

### Isotype:

IgG

### Purification:

Affinity purification

## Protein Background

This gene encodes the protein trimethyllysine dioxygenase which is the first enzyme in the carnitine biosynthesis pathway. Carnitine play an essential role in the transport of activated fatty acids across the inner mitochondrial membrane. The encoded protein converts trimethyllysine into hydroxytrimethyllysine. A pseudogene of this gene is found on chromosome X. Alternate splicing results in multiple transcript variants.

## Immunogen information

### Gene ID:

55217

### Uniprot

Q9NVH6

### Synonyms:

TMLHE; AUTSX6; BBOX2; TMLD; TMLH; TMLHED; XAP130; epsilon

### Immunogen:

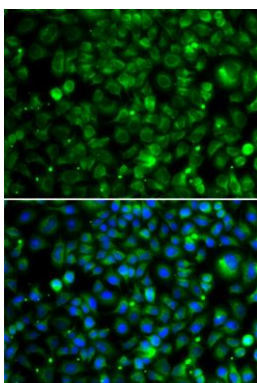
Recombinant fusion protein containing a sequence corresponding to amino acids 167-376 of human TMLHE (NP\_001171726.1).

### Storage:

Store at -20°C. Avoid freeze / thaw cycles. Buffer: PBS with 0.02% sodium azide, 50% glycerol, pH7.3.

## Product Images

---



Immunofluorescence analysis of MCF-7 cells using TMLHE antibody (CAB7312). Blue: DAPI for nuclear staining.