

WBSCR22 Rabbit Polyclonal Antibody



CAB7317

Product Information

Size:

20uL, 50uL, 100uL, 200uL

Observed MW:

36kDa

Calculated MW:

24kDa/31kDa/33kDa

Applications:

WB IHC IF

Reactivity:

Human, Rat

Protein Background

This gene encodes a protein containing a nuclear localization signal and an S-adenosyl-L-methionine binding motif typical of methyltransferases, suggesting that the encoded protein may act on DNA methylation. This gene is deleted in Williams syndrome, a multisystem developmental disorder caused by the deletion of contiguous genes at 7q11.23. Alternatively spliced transcript variants have been found.

Immunogen information

Gene ID:

114049

Uniprot

O43709

Synonyms:

BUD23; HASJ4442; HUSSY-3; MERM1; PP3381; WBMT; WBSCR22

Antibody Information

Recommended dilutions:

WB 1:500 - 1:2000 IHC 1:50
- 1:200 IF 1:50 - 1:100

Source:

Rabbit

Isotype:

IgG

Purification:

Affinity purification

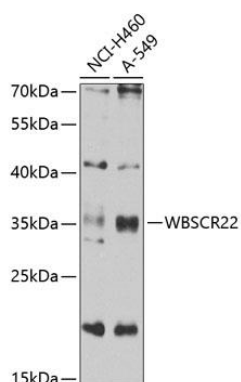
Immunogen:

Recombinant fusion protein containing a sequence corresponding to amino acids 1-281 of human WBSCR22 (NP_059998.2).

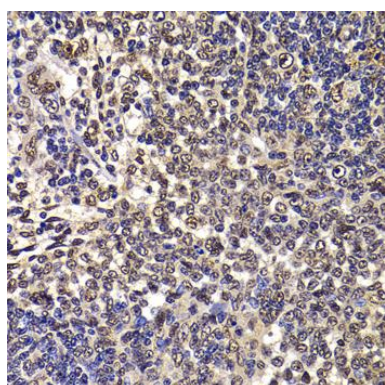
Storage:

Store at -20°C. Avoid freeze / thaw cycles. Buffer: PBS with 0.02% sodium azide, 50% glycerol, pH7.3.

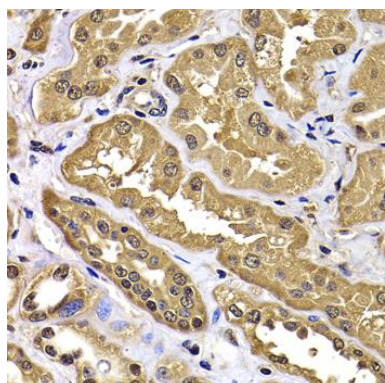
Product Images



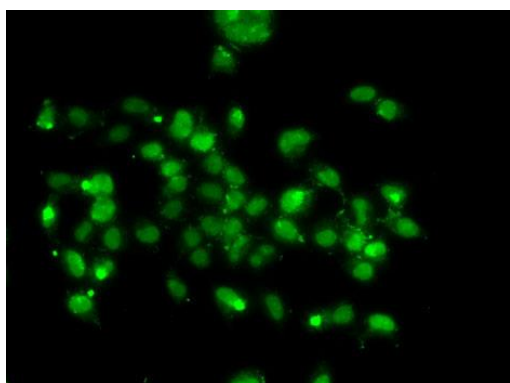
Western blot analysis of extracts of various cell lines, using WBSR22 antibody (CAB7317) at 1:1000 dilution. Secondary antibody: HRP Goat Anti-Rabbit IgG (H+L) (CABS014) at 1:10000 dilution. Lysates/proteins: 25ug per lane. Blocking buffer: 3% nonfat dry milk in TBST. Detection: ECL Basic Kit (CABM00020). Exposure time: 30s.



Immunohistochemistry of paraffin-embedded rat spleen using WBSR22 antibody (CAB7317) at dilution of 1:100 (40x lens).



Immunohistochemistry of paraffin-embedded human kidney using WBSR22 antibody (CAB7317) at dilution of 1:100 (40x lens).



Immunofluorescence analysis of A-549 cells using WBSR22 antibody (CAB7317).