

BMP15 Rabbit Polyclonal Antibody



CAB7321

Product Information

Size:

20uL, 50uL, 100uL, 200uL

Observed MW:

45-50kDa

Calculated MW:

45kDa

Applications:

WB IHC IF

Reactivity:

Human, Mouse, Rat

Antibody Information

Recommended dilutions:

WB 1:500 - 1:2000 IHC 1:50
- 1:200 IF 1:50 - 1:100

Source:

Rabbit

Isotype:

IgG

Purification:

Affinity purification

Protein Background

This gene encodes a secreted ligand of the TGF-beta (transforming growth factor-beta) superfamily of proteins. Ligands of this family bind various TGF-beta receptors leading to recruitment and activation of SMAD family transcription factors that regulate gene expression. The encoded preproprotein is proteolytically processed to generate subunits of a disulfide-linked homodimer, or alternatively, a heterodimer, with the related protein, growth differentiation factor 9 (GDF9). This protein plays a role in oocyte maturation and follicular development, through activation of granulosa cells. Defects in this gene are the cause of ovarian dysgenesis and are associated with premature ovarian failure.

Immunogen information

Gene ID:

9210

Uniprot

O95972

Synonyms:

BMP15; GDF9B; ODG2; POF4

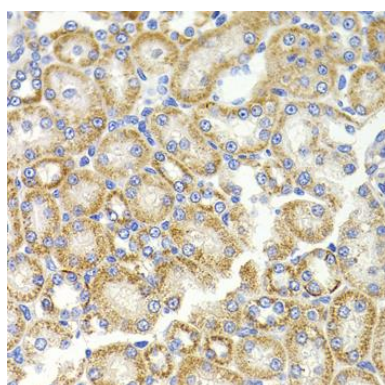
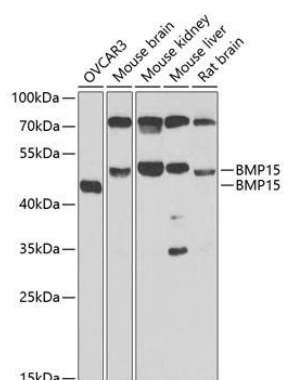
Immunogen:

Recombinant fusion protein containing a sequence corresponding to amino acids 143-392 of human BMP15 (NP_005439.2).

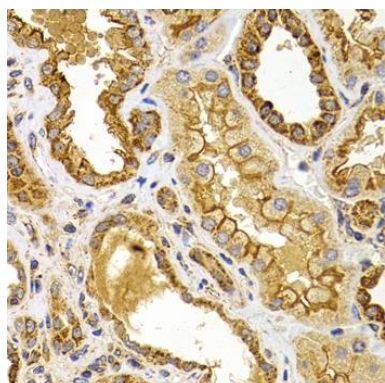
Storage:

Store at -20°C. Avoid freeze / thaw cycles. Buffer: PBS with 0.02% sodium azide, 50% glycerol, pH7.3.

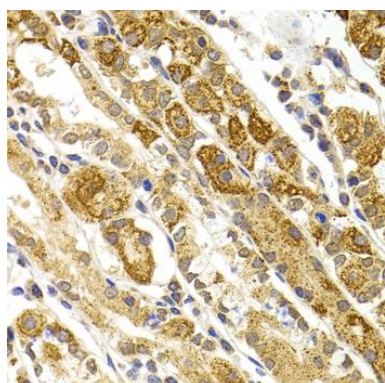
Product Images



Immunohistochemistry of paraffin-embedded rat kidney using BMP15 antibody (CAB7321) at dilution of 1:100 (40x lens).



Immunohistochemistry of paraffin-embedded human kidney using BMP15 antibody (CAB7321) at dilution of 1:100 (40x lens).



Immunohistochemistry of paraffin-embedded human stomach using BMP15 antibody (CAB7321) at dilution of 1:100 (40x lens).