

KU70 Rabbit Polyclonal Antibody



CAB7330

Product Information

Size:

20uL, 50uL, 100uL, 200uL

Observed MW:

70kDa

Calculated MW:

65kDa/69kDa

Applications:

WB IHC IF IP

Reactivity:

Human, Mouse, Rat

Protein Background

The p70/p80 autoantigen is a nuclear complex consisting of two subunits with molecular masses of approximately 70 and 80 kDa. The complex functions as a single-stranded DNA-dependent ATP-dependent helicase. The complex may be involved in the repair of nonhomologous DNA ends such as that required for double-strand break repair, transposition, and V(D)J recombination. High levels of autoantibodies to p70 and p80 have been found in some patients with systemic lupus erythematosus.

Immunogen information

Gene ID:

2547

Uniprot

P12956

Synonyms:

XRCC6; CTC75; CTCBF; G22P1; KU70; ML8; TLAA

Antibody Information

Recommended dilutions:

WB 1:500 - 1:2000 IHC 1:50

- 1:100 IF 1:50 - 1:100 IP

1:20 - 1:50

Source:

Rabbit

Isotype:

IgG

Purification:

Affinity purification

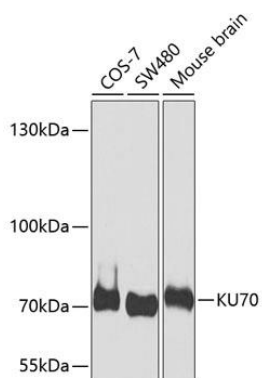
Immunogen:

Recombinant fusion protein containing a sequence corresponding to amino acids 408-609 of human KU70 (NP_001460.1).

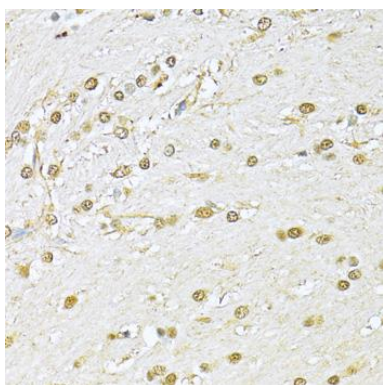
Storage:

Store at -20°C. Avoid freeze / thaw cycles. Buffer: PBS with 0.02% sodium azide, 50% glycerol, pH7.3.

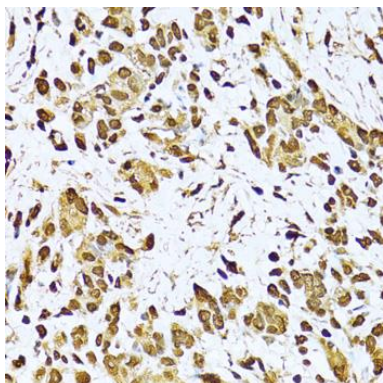
Product Images



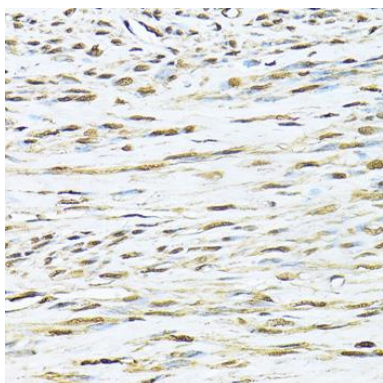
Western blot analysis of extracts of various cell lines, using KU70 antibody (CAB7330) at 1:1000 dilution. Secondary antibody: HRP Goat Anti-Rabbit IgG (H+L) (CABS014) at 1:10000 dilution. Lysates/proteins: 25ug per lane. Blocking buffer: 3% nonfat dry milk in TBST. Detection: ECL Basic Kit (CABM00020). Exposure time: 60s.



Immunohistochemistry of paraffin-embedded rat brain using KU70 antibody (CAB7330) at dilution of 1:100 (40x lens).



Immunohistochemistry of paraffin-embedded human gastric cancer using KU70 antibody (CAB7330) at dilution of 1:100 (40x lens).



Immunohistochemistry of paraffin-embedded human uterus using KU70 antibody (CAB7330) at dilution of 1:100 (40x lens).