

# PON1 Rabbit Polyclonal Antibody



CAB7338

## Product Information

### Size:

20uL, 50uL, 100uL, 200uL

### Observed MW:

40kDa/55kDa

### Calculated MW:

39kDa

### Applications:

WB IHC

### Reactivity:

Human, Mouse, Rat

## Protein Background

The enzyme encoded by this gene is an arylesterase that mainly hydrolyzes paroxon to produce p-nitrophenol. Paroxon is an organophosphorus anticholinesterase compound that is produced in vivo by oxidation of the insecticide parathion. Polymorphisms in this gene are a risk factor in coronary artery disease. The gene is found in a cluster of three related paraoxonase genes at 7q21.3.

## Immunogen information

### Gene ID:

5444

### Uniprot

P27169

### Synonyms:

PON1; ESA; MVCD5; PON

## Antibody Information

### Recommended dilutions:

WB 1:500 - 1:2000 IHC 1:50  
- 1:100

### Source:

Rabbit

### Isotype:

IgG

### Purification:

Affinity purification

### Immunogen:

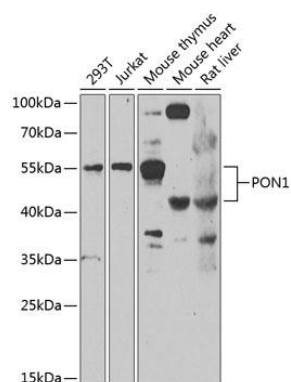
Recombinant fusion protein containing a sequence corresponding to amino acids 20-150 of human PON1 (NP\_000437.3).

### Storage:

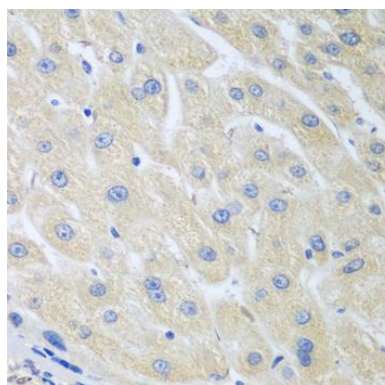
Store at -20°C. Avoid freeze / thaw cycles. Buffer: PBS with 0.02% sodium azide, 50% glycerol, pH7.3.

## Product Images

---



Western blot analysis of extracts of various cell lines, using PON1 antibody (CAB7338) at 1:1000 dilution. Secondary antibody: HRP Goat Anti-Rabbit IgG (H+L) (CABS014) at 1:10000 dilution. Lysates/proteins: 25ug per lane. Blocking buffer: 3% nonfat dry milk in TBST. Detection: ECL Enhanced Kit (CABM00021). Exposure time: 90s.



Immunohistochemistry of paraffin-embedded human liver cancer using PON1 antibody (CAB7338) at dilution of 1:100 (40x lens).