

[KO Validated] AMPKAlpha2 Rabbit Polyclonal Antibody

CAB7339



Product Information

Size:

20uL, 50uL, 100uL, 200uL

Observed MW:

69kDa

Calculated MW:

62kDa

Applications:

WB IHC IF

Reactivity:

Human, Mouse, Rat

Antibody Information

Recommended dilutions:

WB 1:500 - 1:2000 IHC 1:50
- 1:200 IF 1:50 - 1:200

Source:

Rabbit

Isotype:

IgG

Purification:

Affinity purification

Protein Background

The protein encoded by this gene is a catalytic subunit of the AMP-activated protein kinase (AMPK). AMPK is a heterotrimer consisting of an alpha catalytic subunit, and non-catalytic beta and gamma subunits. AMPK is an important energy-sensing enzyme that monitors cellular energy status. In response to cellular metabolic stresses, AMPK is activated, and thus phosphorylates and inactivates acetyl-CoA carboxylase (ACC) and beta-hydroxy beta-methylglutaryl-CoA reductase (HMGCR), key enzymes involved in regulating de novo biosynthesis of fatty acid and cholesterol. Studies of the mouse counterpart suggest that this catalytic subunit may control whole-body insulin sensitivity and is necessary for maintaining myocardial energy homeostasis during ischemia.

Immunogen information

Gene ID:

5563

Uniprot

P54646

Synonyms:

PRKAA2; AMPK; AMPK2; AMPKa2; PRKAA

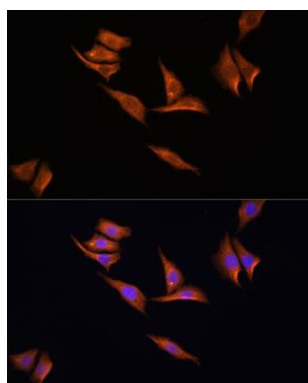
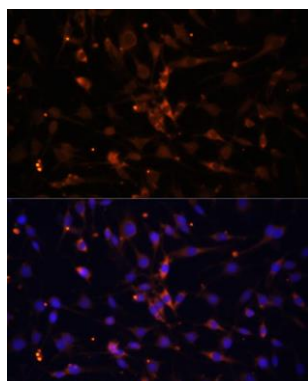
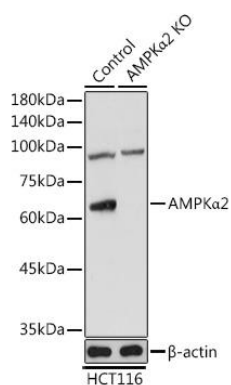
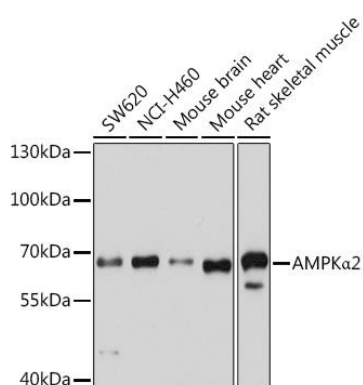
Immunogen:

Recombinant fusion protein containing a sequence corresponding to amino acids 343-552 of human AMPKAlpha2 (NP_006243.2).

Storage:

Store at -20°C. Avoid freeze / thaw cycles. Buffer: PBS with 0.02% sodium azide, 50% glycerol, pH7.3.

Product Images



Western blot analysis of extracts of various cell lines, using AMPK α 2 antibody (CAB7339) at 1:1000 dilution. Secondary antibody: HRP Goat Anti-Rabbit IgG (H+L) (CABS014) at 1:10000 dilution. Lysates/proteins: 25ug per lane. Blocking buffer: 3% nonfat dry milk in TBST. Detection: ECL Basic Kit (CABM00020). Exposure time: 20s.

Western blot analysis of extracts from normal (control) and AMPK α 2 Rabbit pAb knockout (KO) HCT116 cells, using AMPK α 2 Rabbit pAb antibody (CAB7339) at 1:1000 dilution. Secondary antibody: HRP Goat Anti-Rabbit IgG (H+L) (CABS014) at 1:10000 dilution. Lysates/proteins: 25ug per lane. Blocking buffer: 3% nonfat dry milk in TBST. Detection: ECL Basic Kit (CABM00020). Exposure time: 60s.

Immunofluorescence analysis of C6 cells using AMPK α 2 Polyclonal Antibody (CAB7339) at dilution of 1:100 (40x lens). Blue: DAPI for nuclear staining.

Immunofluorescence analysis of HeLa cells using AMPK α 2 Polyclonal Antibody (CAB7339) at dilution of 1:100 (40x lens). Blue: DAPI for nuclear staining.