

PTGS1 Rabbit Polyclonal Antibody



CAB7341

Product Information

Size:

20uL, 50uL, 100uL, 200uL

Observed MW:

69kDa

Calculated MW:

56kDa/61kDa/64kDa/68kDa/
71kDa/72kDa

Applications:

WB IHC IF

Reactivity:

Human, Mouse, Rat

Antibody Information

Recommended dilutions:

WB 1:500 - 1:2000 IHC
1:100 - 1:200 IF 1:50 -
1:200

Source:

Rabbit

Isotype:

IgG

Purification:

Affinity purification

Protein Background

This is one of two genes encoding similar enzymes that catalyze the conversion of arachinodate to prostaglandin. The encoded protein regulates angiogenesis in endothelial cells, and is inhibited by nonsteroidal anti-inflammatory drugs such as aspirin. Based on its ability to function as both a cyclooxygenase and as a peroxidase, the encoded protein has been identified as a moonlighting protein. The protein may promote cell proliferation during tumor progression. Alternative splicing results in multiple transcript variants.

Immunogen information

Gene ID:

5742

Uniprot

P23219

Synonyms:

PTGS1; COX1; COX3; PCOX1; PES-1; PGG/HS; PGHS-1; PGHS1;
PHS1; PTGHS

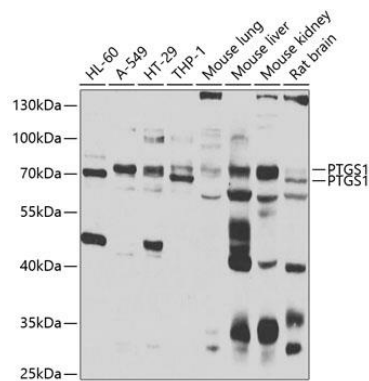
Immunogen:

Recombinant fusion protein containing a sequence corresponding to amino acids 1-180 of human PTGS1 (NP_001258094.1).

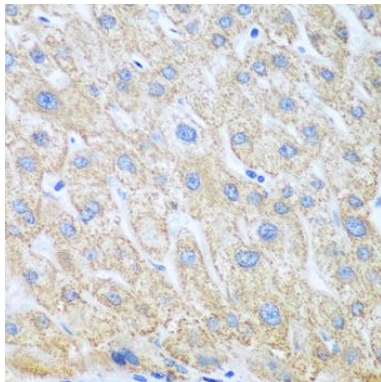
Storage:

Store at -20°C. Avoid freeze / thaw cycles. Buffer: PBS with 0.02% sodium azide, 50% glycerol, pH7.3.

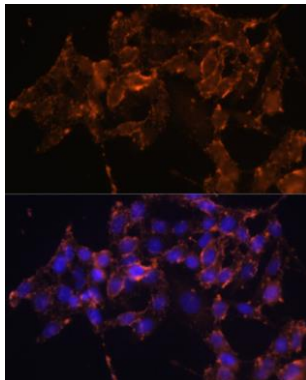
Product Images



Western blot analysis of extracts of various cell lines, using PTGS1 antibody (CAB7341) at 1:1000 dilution. Secondary antibody: HRP Goat Anti-Rabbit IgG (H+L) (CABS014) at 1:10000 dilution. Lysates/proteins: 25ug per lane. Blocking buffer: 3% nonfat dry milk in TBST. Detection: ECL Enhanced Kit (CABM00021). Exposure time: 15s.



Immunohistochemistry of paraffin-embedded human liver cancer using PTGS1 antibody (CAB7341) at dilution of 1:100 (40x lens).



Immunofluorescence analysis of HeLa cells using PTGS1 Polyclonal Antibody (CAB7341) at dilution of 1:100 (40x lens). Blue: DAPI for nuclear staining.