

RAB5C Rabbit Polyclonal Antibody



CAB7342

Product Information

Size:

20uL, 50uL, 100uL, 200uL

Observed MW:

23kDa

Calculated MW:

23kDa/27kDa

Applications:

WB IHC

Reactivity:

Human, Mouse, Rat

Antibody Information

Recommended dilutions:

WB 1:500 - 1:2000 IHC 1:50
- 1:200

Source:

Rabbit

Isotype:

IgG

Purification:

Affinity purification

Protein Background

Immunogen information

Gene ID:

5878

Uniprot

P51148

Synonyms:

RAB5C; L1880; RAB5CL; RAB5L; RABL

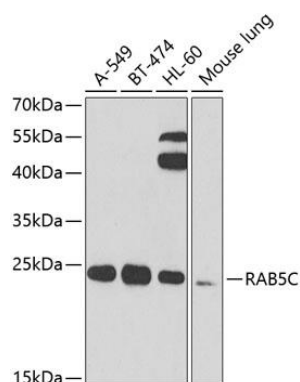
Immunogen:

Recombinant fusion protein containing a sequence corresponding to amino acids 1-216 of human RAB5C (NP_958842.1).

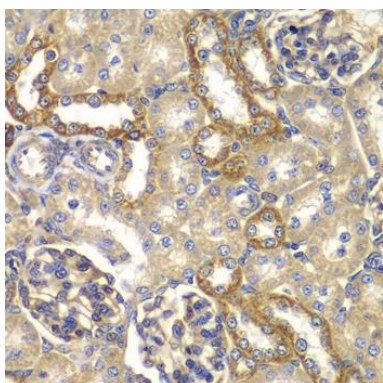
Storage:

Store at -20°C. Avoid freeze / thaw cycles. Buffer: PBS with 0.02% sodium azide, 50% glycerol, pH7.3.

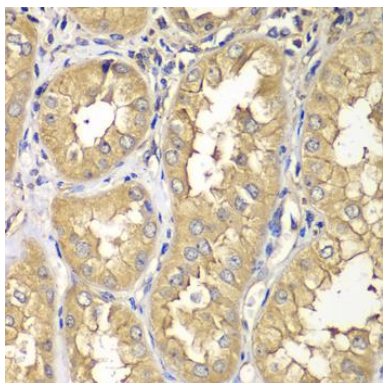
Product Images



Western blot analysis of extracts of various cell lines, using RAB5C antibody (CAB7342) at 1:1000 dilution. Secondary antibody: HRP Goat Anti-Rabbit IgG (H+L) (CABS014) at 1:10000 dilution. Lysates/proteins: 25ug per lane. Blocking buffer: 3% nonfat dry milk in TBST. Detection: ECL Enhanced Kit (CABM00021). Exposure time: 90s.



Immunohistochemistry of paraffin-embedded rat kidney using RAB5C antibody (CAB7342) at dilution of 1:100 (40x lens).



Immunohistochemistry of paraffin-embedded human kidney using RAB5C antibody (CAB7342) at dilution of 1:100 (40x lens).