

# UBE2H Rabbit Polyclonal Antibody



CAB7344

## Product Information

### Size:

20uL, 50uL, 100uL, 200uL

### Observed MW:

21-42kDa

### Calculated MW:

17kDa/20kDa

### Applications:

WB IF

### Reactivity:

Human, Mouse, Rat

## Antibody Information

### Recommended dilutions:

WB 1:500 - 1:2000 IF 1:50 - 1:200

### Source:

Rabbit

### Isotype:

IgG

### Purification:

Affinity purification

## Protein Background

The modification of proteins with ubiquitin is an important cellular mechanism for targeting abnormal or short-lived proteins for degradation. Ubiquitination involves at least three classes of enzymes: ubiquitin-activating enzymes, or E1s, ubiquitin-conjugating enzymes, or E2s, and ubiquitin-protein ligases, or E3s. This gene encodes a member of the E2 ubiquitin-conjugating enzyme family. The encoded protein sequence is 100% identical to the mouse homolog and 98% identical to the frog and zebrafish homologs. Three alternatively spliced transcript variants have been found for this gene and they encode distinct isoforms.

## Immunogen information

### Gene ID:

7328

### Uniprot

P62256

### Synonyms:

UBE2H; E2-20K; GID3; UBC8; UBCH; UBCH2

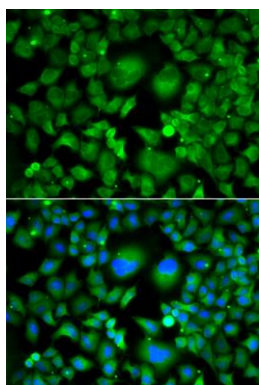
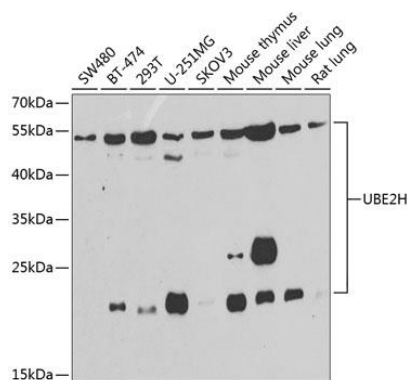
### Immunogen:

Recombinant fusion protein containing a sequence corresponding to amino acids 1-183 of human UBE2H (NP\_003335.1).

### Storage:

Store at -20°C. Avoid freeze / thaw cycles. Buffer: PBS with 0.02% sodium azide, 50% glycerol, pH7.3.

## Product Images



Western blot analysis of extracts of various cell lines, using UBE2H antibody (CAB7344) at 1:1000 dilution. Secondary antibody: HRP Goat Anti-Rabbit IgG (H+L) (CABS014) at 1:10000 dilution. Lysates/proteins: 25ug per lane. Blocking buffer: 3% nonfat dry milk in TBST. Detection: ECL Basic Kit (CABM00020). Exposure time: 90s.

Immunofluorescence analysis of A549 cells using UBE2H antibody (CAB7344). Blue: DAPI for nuclear staining.