

# DPF1 Rabbit Polyclonal Antibody



CAB7349

---

## Product Information

### Size:

20uL, 50uL, 100uL, 200uL

### Observed MW:

Refer to figures

### Calculated MW:

37kDa/42kDa/46kDa

### Applications:

WB IF

### Reactivity:

Human, Mouse, Rat

## Antibody Information

### Recommended dilutions:

WB 1:500 - 1:2000 IF 1:50 - 1:100

### Source:

Rabbit

### Isotype:

IgG

### Purification:

Affinity purification

## Protein Background

### Immunogen information

#### Gene ID:

8193

#### Uniprot

Q92782

#### Synonyms:

DPF1; BAF45b; NEUD4; neuro-d4

#### Immunogen:

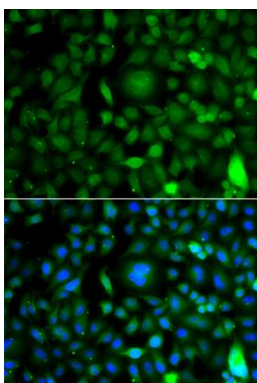
Recombinant fusion protein containing a sequence corresponding to amino acids 295-414 of human DPF1 (NP\_001128627.1).

#### Storage:

Store at -20°C. Avoid freeze / thaw cycles. Buffer: PBS with 0.02% sodium azide, 50% glycerol, pH7.3.

## Product Images

---



Immunofluorescence analysis of A549 cells using DPF1 antibody (CAB7349). Blue: DAPI for nuclear staining.