

LZTR1 Rabbit Polyclonal Antibody



CAB7350

Product Information

Size:

20uL, 50uL, 100uL, 200uL

Observed MW:

110kDa

Calculated MW:

94kDa

Applications:

WB IHC IF

Reactivity:

Human, Mouse

Protein Background

This gene encodes a member of the BTB-kelch superfamily. Initially described as a putative transcriptional regulator based on weak homology to members of the basic leucine zipper-like family, the encoded protein subsequently has been shown to localize exclusively to the Golgi network where it may help stabilize the Gogli complex. Deletion of this gene may be associated with DiGeorge syndrome.

Immunogen information

Gene ID:

8216

Uniprot

Q8N653

Synonyms:

LZTR1; BTBD29; LZTR-1; NS10; SWNTS2

Antibody Information

Recommended dilutions:

WB 1:500 - 1:2000 IHC 1:50
- 1:200 IF 1:50 - 1:200

Source:

Rabbit

Isotype:

IgG

Purification:

Affinity purification

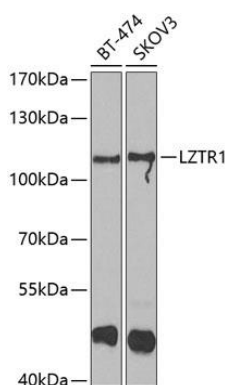
Immunogen:

Recombinant fusion protein containing a sequence corresponding to amino acids 300-545 of human LZTR1 (NP_006758.2).

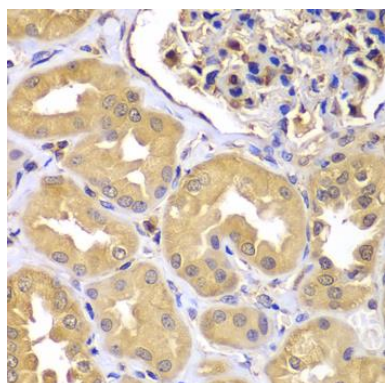
Storage:

Store at -20°C. Avoid freeze / thaw cycles. Buffer: PBS with 0.02% sodium azide, 50% glycerol, pH7.3.

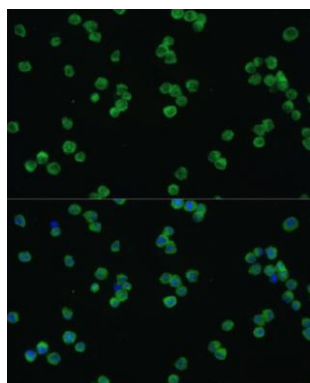
Product Images



Western blot analysis of extracts of various cell lines, using LZTR1 antibody (CAB7350) at 1:1000 dilution. Secondary antibody: HRP Goat Anti-Rabbit IgG (H+L) (CABS014) at 1:10000 dilution. Lysates/proteins: 25ug per lane. Blocking buffer: 3% nonfat dry milk in TBST. Detection: ECL Enhanced Kit (CABM00021). Exposure time: 90s.



Immunohistochemistry of paraffin-embedded human kidney using LZTR1 antibody (CAB7350) at dilution of 1:100 (40x lens).



Immunofluorescence analysis of Raw264.7 cells using LZTR1 antibody (CAB7350) at dilution of 1:100. Blue: DAPI for nuclear staining.