

# [KO Validated] Beclin 1 Rabbit Polyclonal Antibody

## CAB7353



### Product Information

**Size:**

20uL, 50uL, 100uL, 200uL

**Observed MW:**

60kDa

**Calculated MW:**

51kDa

**Applications:**

WB IHC IF IP

**Reactivity:**

Human, Mouse, Rat

### Protein Background

This gene encodes a protein that regulates autophagy, a catabolic process of degradation induced by starvation. The encoded protein is a component of the phosphatidylinositol-3-kinase (PI3K) complex which mediates vesicle-trafficking processes. This protein is thought to play a role in multiple cellular processes, including tumorigenesis, neurodegeneration and apoptosis. Alternative splicing results in multiple transcript variants.

### Immunogen information

**Gene ID:**

8678

**Uniprot**

Q14457

**Synonyms:**

ATG6; VPS30; beclin1; Beclin 1; BECN1; beclin-1

### Antibody Information

**Recommended dilutions:**

WB 1:500 - 1:2000 IHC 1:50  
- 1:200 IF 1:50 - 1:200 IP  
1:50 - 1:100

**Source:**

Rabbit

**Isotype:**

IgG

**Purification:**

Affinity purification

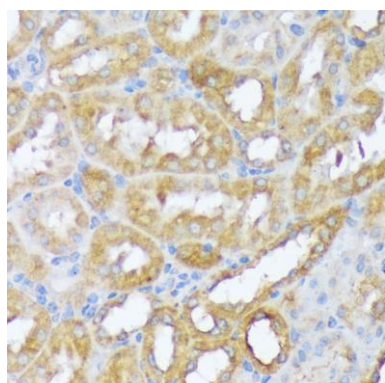
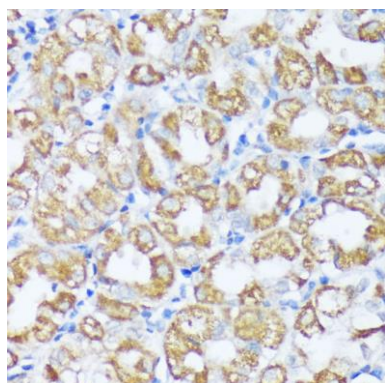
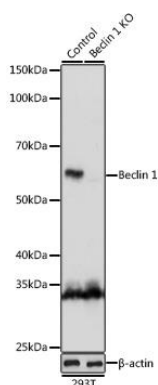
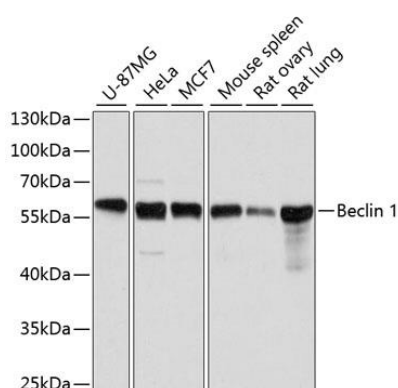
**Immunogen:**

Recombinant fusion protein containing a sequence corresponding to amino acids 1-280 of human Beclin 1 (NP\_003757.1).

**Storage:**

Store at -20°C. Avoid freeze / thaw cycles. Buffer: PBS with 0.02% sodium azide, 50% glycerol, pH7.3.

## Product Images



Western blot analysis of extracts of various cell lines, using Beclin 1 antibody (CAB7353) at 1:1000 dilution. Secondary antibody: HRP Goat Anti-Rabbit IgG (H+L) (CABS014) at 1:10000 dilution. Lysates/proteins: 25ug per lane. Blocking buffer: 3% nonfat dry milk in TBST. Detection: ECL Basic Kit (CABM00020). Exposure time: 5s.

Western blot analysis of extracts from normal (control) and Beclin 1 knockout (KO) 293T cells, using Beclin 1 antibody (CAB7353) at 1:1000 dilution. Secondary antibody: HRP Goat Anti-Rabbit IgG (H+L) (CABS014) at 1:10000 dilution. Lysates/proteins: 25ug per lane. Blocking buffer: 3% nonfat dry milk in TBST. Detection: ECL Basic Kit (CABM00020). Exposure time: 3s.

Immunohistochemistry of paraffin-embedded human stomach using Beclin 1 antibody (CAB7353) at dilution of 1:100 (40x lens).

Immunohistochemistry of paraffin-embedded mouse kidney using Beclin 1 antibody (CAB7353) at dilution of 1:100 (40x lens).