

# ATG7 Rabbit Polyclonal Antibody



CAB7360

## Product Information

### Size:

20uL, 50uL, 100uL, 200uL

### Observed MW:

### Calculated MW:

68kDa/75kDa/77kDa

### Applications:

IHC

### Reactivity:

Human

## Antibody Information

### Recommended dilutions:

IHC 1:50 - 1:100

### Source:

Rabbit

### Isotype:

IgG

### Purification:

Affinity purification

## Protein Background

This gene encodes an E1-like activating enzyme that is essential for autophagy and cytoplasmic to vacuole transport. The encoded protein is also thought to modulate p53-dependent cell cycle pathways during prolonged metabolic stress. It has been associated with multiple functions, including axon membrane trafficking, axonal homeostasis, mitophagy, adipose differentiation, and hematopoietic stem cell maintenance. Alternative splicing results in multiple transcript variants.

## Immunogen information

### Gene ID:

10533

### Uniprot

O95352

### Synonyms:

ATG7; APG7-LIKE; APG7L; GSA7; Apg7/Atg7

### Immunogen:

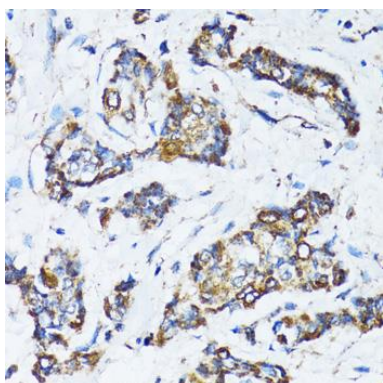
Recombinant fusion protein containing a sequence corresponding to amino acids 500-676 of human ATG7 (NP\_001129503.2).

### Storage:

Store at -20°C. Avoid freeze / thaw cycles. Buffer: PBS with 0.02% sodium azide, 50% glycerol, pH7.3.

## Product Images

---



Immunohistochemistry of paraffin-embedded human breast cancer using ATG7 antibody (CAB7360) at dilution of 1:100 (40x lens).