

PRDM5 Rabbit Polyclonal Antibody



CAB7361

Product Information

Size:

20uL, 50uL, 100uL, 200uL

Observed MW:

110kDa

Calculated MW:

12kDa/58kDa/69kDa/73kDa

Applications:

WB IHC IF

Reactivity:

Human, Mouse, Rat

Protein Background

The protein encoded by this gene is a transcription factor of the PR-domain protein family. It contains a PR-domain and multiple zinc finger motifs. Transcription factors of the PR-domain family are known to be involved in cell differentiation and tumorigenesis.

Immunogen information

Gene ID:

11107

Uniprot

Q9NQX1

Synonyms:

PRDM5; BCS2; PFM2

Antibody Information

Recommended dilutions:

WB 1:500 - 1:2000 IHC 1:50
- 1:200 IF 1:50 - 1:200

Source:

Rabbit

Isotype:

IgG

Purification:

Affinity purification

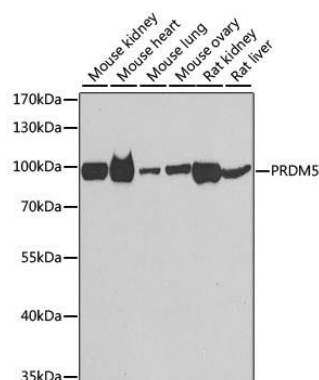
Immunogen:

Recombinant fusion protein containing a sequence corresponding to amino acids 1-100 of human PRDM5 (NP_061169.2).

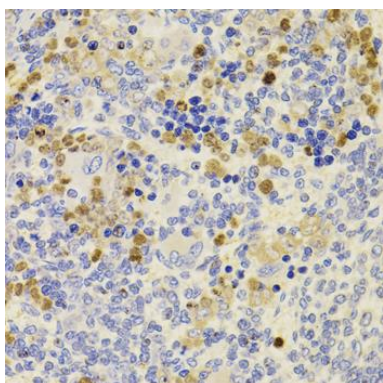
Storage:

Store at -20°C. Avoid freeze / thaw cycles. Buffer: PBS with 0.02% sodium azide, 50% glycerol, pH7.3.

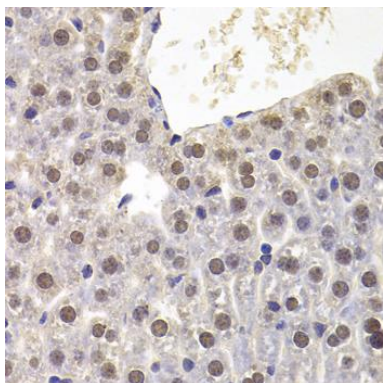
Product Images



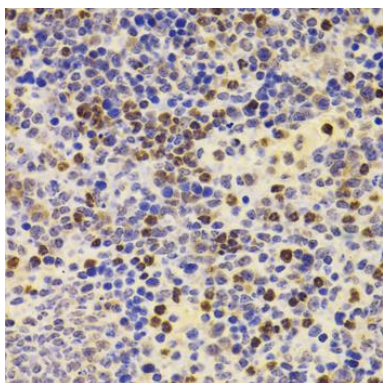
Western blot analysis of extracts of various cell lines, using PRDM5 antibody (CAB7361) at 1:1000 dilution. Secondary antibody: HRP Goat Anti-Rabbit IgG (H+L) (CABS014) at 1:10000 dilution. Lysates/proteins: 25ug per lane. Blocking buffer: 3% nonfat dry milk in TBST. Detection: ECL Basic Kit (CABM00020). Exposure time: 90s.



Immunohistochemistry of paraffin-embedded rat spleen using PRDM5 antibody (CAB7361) at dilution of 1:100 (40x lens).



Immunohistochemistry of paraffin-embedded mouse liver using PRDM5 antibody (CAB7361) at dilution of 1:100 (40x lens).



Immunohistochemistry of paraffin-embedded mouse spleen using PRDM5 antibody (CAB7361) at dilution of 1:100 (40x lens).