

CHRAC1 Rabbit Polyclonal Antibody



CAB7372

Product Information

Size:

20uL, 50uL, 100uL, 200uL

Observed MW:

15kDa

Calculated MW:

14kDa

Applications:

WB IHC IF

Reactivity:

Human, Mouse

Antibody Information

Recommended dilutions:

WB 1:500 - 1:2000 IHC 1:50
- 1:100 IF 1:50 - 1:200

Source:

Rabbit

Isotype:

IgG

Purification:

Affinity purification

Protein Background

Immunogen information

Gene ID:

54108

Uniprot

Q9NRG0

Synonyms:

CHRAC1; CHARC1; CHARC15; CHRAC-1; CHRAC-15; CHRAC15;
YCL1

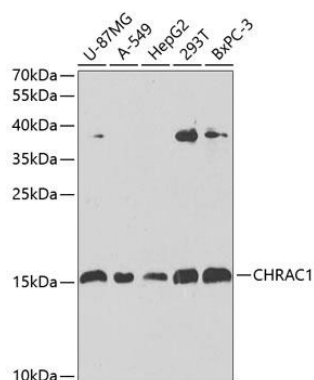
Immunogen:

Recombinant fusion protein containing a sequence corresponding to amino acids 1-131 of human CHRAC1 (NP_059140.1).

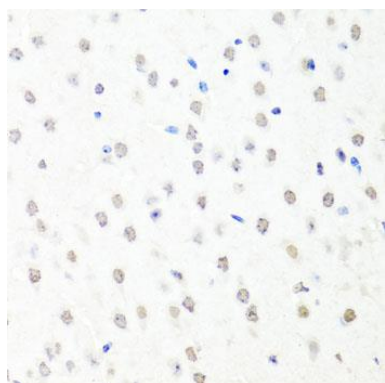
Storage:

Store at -20°C. Avoid freeze / thaw cycles. Buffer: PBS with 0.02% sodium azide, 50% glycerol, pH7.3.

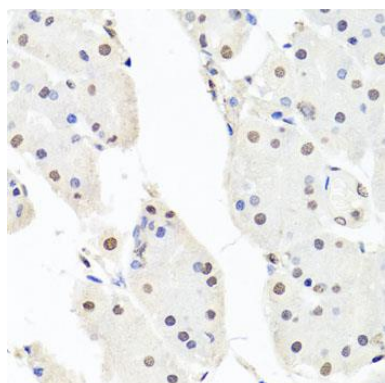
Product Images



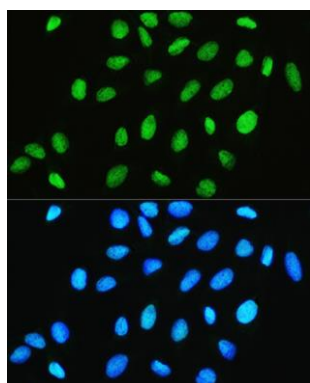
Western blot analysis of extracts of various cell lines, using CHRAC1 antibody (CAB7372) at 1:1000 dilution. Secondary antibody: HRP Goat Anti-Rabbit IgG (H+L) (CABS014) at 1:10000 dilution. Lysates/proteins: 25ug per lane. Blocking buffer: 3% nonfat dry milk in TBST. Detection: ECL Basic Kit (CABM00020). Exposure time: 60s.



Immunohistochemistry of paraffin-embedded mouse brain using CHRAC1 antibody (CAB7372) at dilution of 1:100 (40x lens).



Immunohistochemistry of paraffin-embedded human stomach using CHRAC1 antibody (CAB7372) at dilution of 1:100 (40x lens).



Immunofluorescence analysis of U2OS cells using CHRAC1 Rabbit pAb (CAB7372) at dilution of 1:100. Blue: DAPI for nuclear staining.