

UBE2R2 Rabbit Polyclonal Antibody



CAB7373

Product Information

Size:

20uL, 50uL, 100uL, 200uL

Observed MW:

27kDa

Calculated MW:

27kDa

Applications:

WB IHC IF

Reactivity:

Human, Mouse, Rat

Protein Background

Protein kinase CK2 is a ubiquitous and pleiotropic Ser/Thr protein kinase involved in cell growth and transformation. This gene encodes a protein similar to the E2 ubiquitin conjugating enzyme UBC3/CDC34. Studies suggest that CK2-dependent phosphorylation of this ubiquitin-conjugating enzyme functions by regulating beta-TrCP substrate recognition and induces its interaction with beta-TrCP, enhancing beta-catenin degradation.

Immunogen information

Gene ID:

54926

Uniprot

Q712K3

Synonyms:

UBE2R2; CDC34B; E2-CDC34B; UBC3B

Antibody Information

Recommended dilutions:

WB 1:500 - 1:2000 IHC 1:50
- 1:200 IF 1:50 - 1:200

Source:

Rabbit

Isotype:

IgG

Purification:

Affinity purification

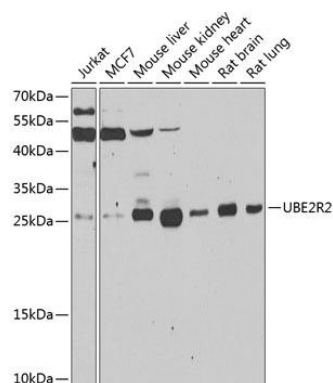
Immunogen:

Recombinant fusion protein containing a sequence corresponding to amino acids 1-238 of human UBE2R2 (NP_060281.2).

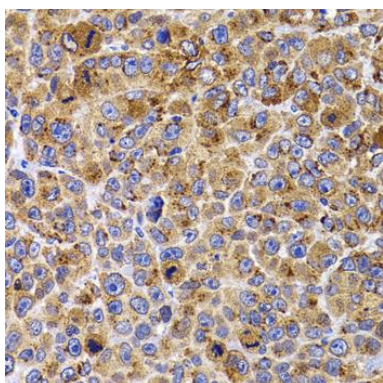
Storage:

Store at -20°C. Avoid freeze / thaw cycles. Buffer: PBS with 0.02% sodium azide, 50% glycerol, pH7.3.

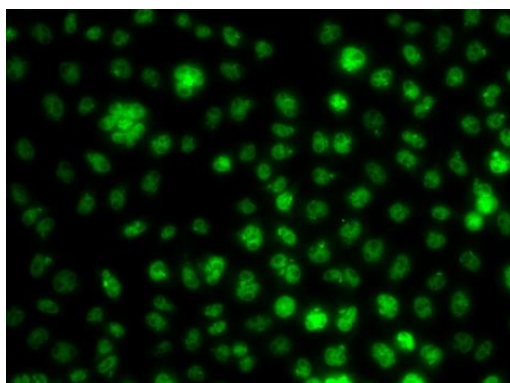
Product Images



Western blot analysis of extracts of various cell lines, using UBE2R2 antibody (CAB7373) at 1:1000 dilution. Secondary antibody: HRP Goat Anti-Rabbit IgG (H+L) (CABS014) at 1:10000 dilution. Lysates/proteins: 25ug per lane. Blocking buffer: 3% nonfat dry milk in TBST. Detection: ECL Enhanced Kit (CABM00021). Exposure time: 30s.



Immunohistochemistry of paraffin-embedded mouse cancer using UBE2R2 antibody (CAB7373) at dilution of 1:100 (40x lens).



Immunofluorescence analysis of A549 cells using UBE2R2 antibody (CAB7373).