

# SUPT20H Rabbit Polyclonal Antibody



CAB7374

---

## Product Information

### Size:

20uL, 50uL, 100uL, 200uL

### Observed MW:

86kDa

### Calculated MW:

80kDa/85kDa/88kDa

### Applications:

WB IHC IF

### Reactivity:

Human, Mouse, Rat

## Antibody Information

### Recommended dilutions:

WB 1:500 - 1:2000 IHC 1:50  
- 1:200 IF 1:50 - 1:200

### Source:

Rabbit

### Isotype:

IgG

### Purification:

Affinity purification

## Protein Background

### Immunogen information

#### Gene ID:

55578

#### Uniprot

Q8NEM7

#### Synonyms:

SUPT20H; C13; C13orf19; FAM48A; FP757; P38IP; SPT20

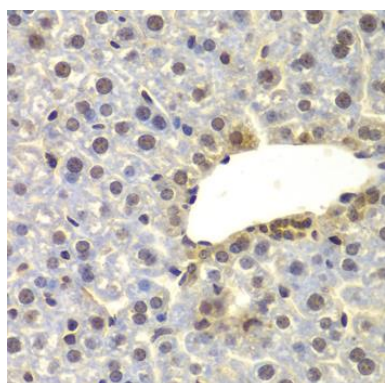
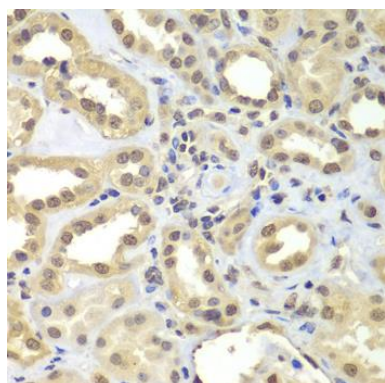
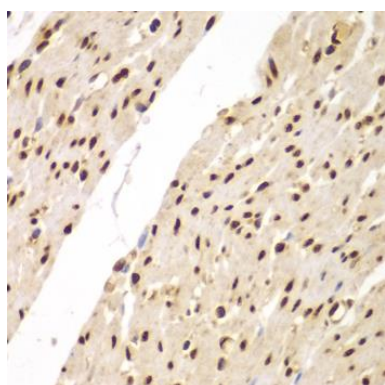
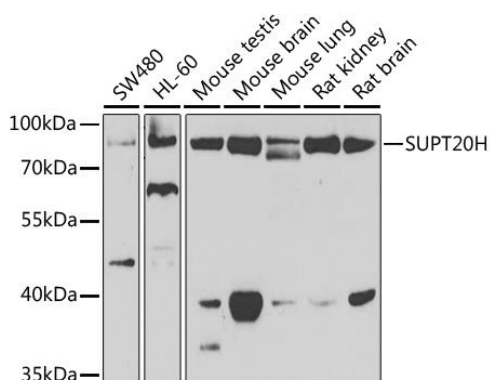
#### Immunogen:

Recombinant fusion protein containing a sequence corresponding to amino acids 580-779 of human SUPT20H (NP\_001014308.2).

#### Storage:

Store at -20°C. Avoid freeze / thaw cycles. Buffer: PBS with 0.02% sodium azide, 50% glycerol, pH7.3.

## Product Images



Western blot analysis of extracts of various cell lines, using SUPT20H antibody (CAB7374) at 1:1000 dilution. Secondary antibody: HRP Goat Anti-Rabbit IgG (H+L) (CABS014) at 1:10000 dilution. Lysates/proteins: 25ug per lane. Blocking buffer: 3% nonfat dry milk in TBST. Detection: ECL Enhanced Kit (CABM00021). Exposure time: 90s.

Immunohistochemistry of paraffin-embedded human colon using SUPT20H antibody (CAB7374) at dilution of 1:100 (40x lens).

Immunohistochemistry of paraffin-embedded human kidney using SUPT20H antibody (CAB7374) at dilution of 1:100 (40x lens).

Immunohistochemistry of paraffin-embedded mouse liver using SUPT20H antibody (CAB7374) at dilution of 1:100 (40x lens).