

# DCP1A Rabbit Polyclonal Antibody



CAB7376

## Product Information

### Size:

20uL, 50uL, 100uL, 200uL

### Observed MW:

70KDa

### Calculated MW:

59kDa/63kDa

### Applications:

WB IF

### Reactivity:

Human, Mouse, Rat

## Protein Background

Decapping is a key step in general and regulated mRNA decay. The protein encoded by this gene is a decapping enzyme. This protein and another decapping enzyme form a decapping complex, which interacts with the nonsense-mediated decay factor hUpf1 and may be recruited to mRNAs containing premature termination codons. This protein also participates in the TGF-beta signaling pathway. Alternative splicing of this gene results in multiple transcript variants.

## Immunogen information

### Gene ID:

55802

### Uniprot

Q9NPI6

### Synonyms:

DCP1A; HSA275986; Nbla00360; SMAD4IP1; SMIF

## Antibody Information

### Recommended dilutions:

WB 1:500 - 1:2000 IF 1:20 - 1:50

### Source:

Rabbit

### Isotype:

IgG

### Purification:

Affinity purification

### Immunogen:

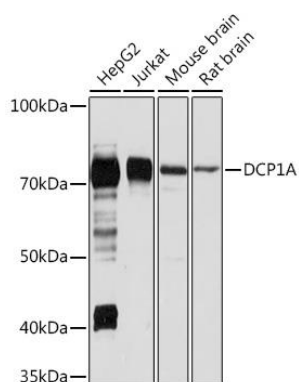
Recombinant fusion protein containing a sequence corresponding to amino acids 303-582 of human DCP1A (NP\_060873.4).

### Storage:

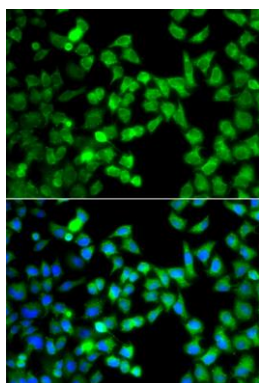
Store at -20°C. Avoid freeze / thaw cycles. Buffer: PBS with 0.02% sodium azide, 50% glycerol, pH7.3.

## Product Images

---



Western blot analysis of extracts of various cell lines, using DCP1A Rabbit pAb (CAB7376) at 1:500 dilution. Secondary antibody: HRP Goat Anti-Rabbit IgG (H+L) (CABS014) at 1:10000 dilution. Lysates/proteins: 25ug per lane. Blocking buffer: 3% nonfat dry milk in TBST. Detection: ECL Basic Kit (CABM00020). Exposure time: 30s.



Immunofluorescence analysis of A549 cells using DCP1A antibody (CAB7376). Blue: DAPI for nuclear staining.