

PPAN Rabbit Polyclonal Antibody



CAB7377

Product Information

Size:

20uL, 50uL, 100uL, 200uL

Observed MW:

53kDa/55kDa

Calculated MW:

51kDa/53kDa/58kDa

Applications:

WB IHC IF

Reactivity:

Human, Mouse

Antibody Information

Recommended dilutions:

WB 1:500 - 1:2000 IHC 1:50
- 1:200 IF 1:50 - 1:200

Source:

Rabbit

Isotype:

IgG

Purification:

Affinity purification

Protein Background

The protein encoded by this gene is an evolutionarily conserved protein similar to yeast SSF1 as well as to the gene product of the Drosophila gene peter pan (ppan). SSF1 is known to be involved in the second step of mRNA splicing. Both SSF1 and ppan are essential for cell growth and proliferation. Exogenous expression of this gene was reported to reduce the anchorage-independent growth of some tumor cells. Read-through transcription of this gene with P2RY11/P2Y(11), an adjacent downstream gene that encodes an ATP receptor, has been found. These read-through transcripts are ubiquitously present and up-regulated during granulocyte differentiation.

Immunogen information

Gene ID:

56342

Uniprot

Q9NQ55

Synonyms:

PPAN; BXDC3; SSF; SSF-1; SSF1; SSF2

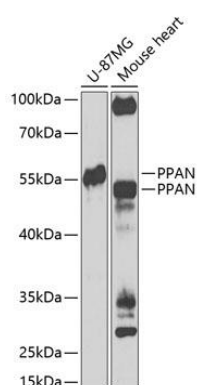
Immunogen:

Recombinant fusion protein containing a sequence corresponding to amino acids 1-300 of human PPAN (NP_064615.3).

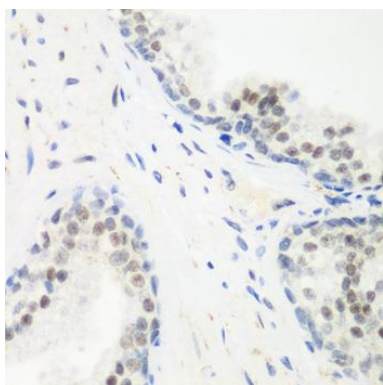
Storage:

Store at -20°C. Avoid freeze / thaw cycles. Buffer: PBS with 0.02% sodium azide, 50% glycerol, pH7.3.

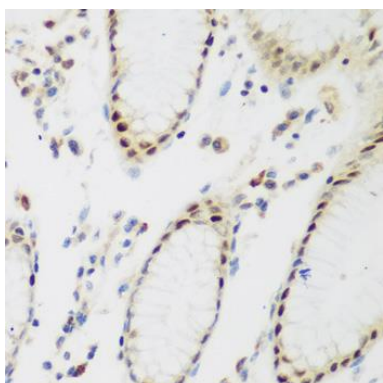
Product Images



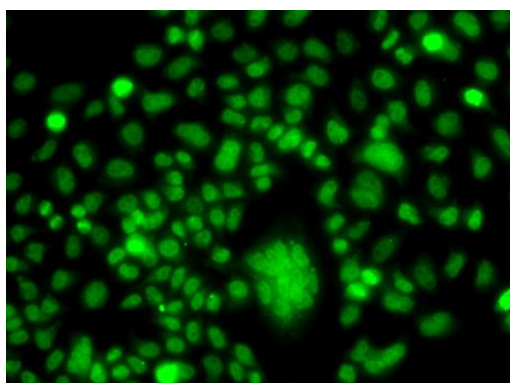
Western blot analysis of extracts of various cell lines, using PPAN Antibody (CAB7377) at 1:1000 dilution. Secondary antibody: HRP Goat Anti-Rabbit IgG (H+L) (CABS014) at 1:10000 dilution. Lysates/proteins: 25ug per lane. Blocking buffer: 3% nonfat dry milk in TBST. Detection: ECL Enhanced Kit (CABM00021). Exposure time: 90s.



Immunohistochemistry of paraffin-embedded human prostate using PPAN antibody (CAB7377) at dilution of 1:200 (40x lens).



Immunohistochemistry of paraffin-embedded human stomach using PPAN antibody (CAB7377) at dilution of 1:200 (40x lens).



Immunofluorescence analysis of A549 cells using PPAN antibody (CAB7377).