

# CSRP2BP Rabbit Polyclonal Antibody



CAB7380

## Product Information

### Size:

20uL, 50uL, 100uL, 200uL

### Observed MW:

89kDa

### Calculated MW:

74kDa/88kDa

### Applications:

WB IHC IF

### Reactivity:

Human, Mouse

## Protein Background

CSRP2 is a protein containing two LIM domains, which are double zinc finger motifs found in proteins of diverse function. CSRP2 and some related proteins are thought to act as protein adapters, bridging two or more proteins to form a larger protein complex. The protein encoded by this gene binds to one of the LIM domains of CSRP2 and contains an acetyltransferase domain. Although the encoded protein has been detected in the cytoplasm, it is predominantly a nuclear protein. Alternatively spliced transcript variants have been described.

## Immunogen information

### Gene ID:

57325

### Uniprot

Q9H8E8

### Synonyms:

KAT14; ATAC2; CRP2BP; CSRP2BP; PRO1194; dJ717M23.1

## Antibody Information

### Recommended dilutions:

WB 1:500 - 1:2000 IHC 1:50  
- 1:200 IF 1:50 - 1:200

### Source:

Rabbit

### Isotype:

IgG

### Purification:

Affinity purification

### Immunogen:

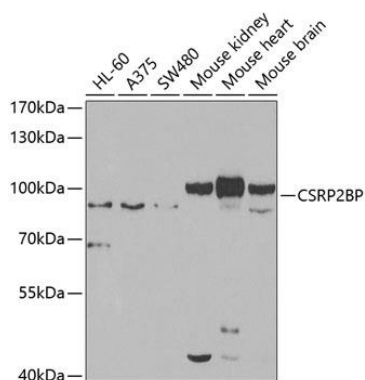
Recombinant fusion protein containing a sequence corresponding to amino acids 523-782 of human CSRP2BP (NP\_065397.3).

### Storage:

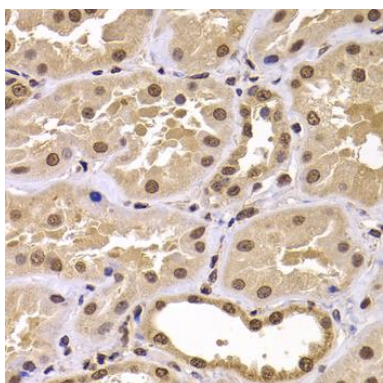
Store at -20°C. Avoid freeze / thaw cycles. Buffer: PBS with 0.02% sodium azide, 50% glycerol, pH7.3.

## Product Images

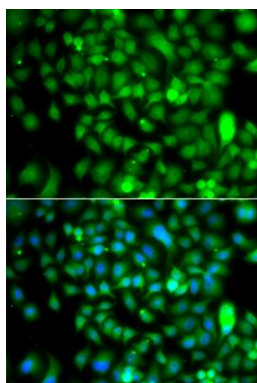
---



Western blot analysis of extracts of various cell lines, using CSR2BP antibody (CAB7380) at 1:1000 dilution. Secondary antibody: HRP Goat Anti-Rabbit IgG (H+L) (CABS014) at 1:10000 dilution. Lysates/proteins: 25ug per lane. Blocking buffer: 3% nonfat dry milk in TBST. Detection: ECL Enhanced Kit (CABM00021). Exposure time: 90s.



Immunohistochemistry of paraffin-embedded human kidney using CSR2BP antibody (CAB7380) at dilution of 1:100 (40x lens).



Immunofluorescence analysis of A549 cells using CSR2BP antibody (CAB7380). Blue: DAPI for nuclear staining.