

NLRC4 Rabbit Polyclonal Antibody



CAB7382

Product Information

Size:

20uL, 50uL, 100uL, 200uL

Observed MW:

116kDa

Calculated MW:

10kDa/18kDa/40kDa/116kDa

Applications:

WB IHC IF

Reactivity:

Human, Mouse, Rat

Antibody Information

Recommended dilutions:

WB 1:500 - 1:2000 IHC 1:50
- 1:200 IF 1:50 - 1:200

Source:

Rabbit

Isotype:

IgG

Purification:

Affinity purification

Protein Background

This gene encodes a member of the caspase recruitment domain-containing NLR family. Family members play essential roles in innate immune response to a wide range of pathogenic organisms, tissue damage and other cellular stresses. Mutations in this gene result in autoinflammation with infantile enterocolitis. Alternative splicing results in multiple transcript variants.

Immunogen information

Gene ID:

58484

Uniprot

Q9NPP4

Synonyms:

NLRC4; AIFEC; CARD12; CLAN; CLAN1; CLANA; CLANB; CLANC;
CLAND; CLR2.1; FCAS4; IPAF

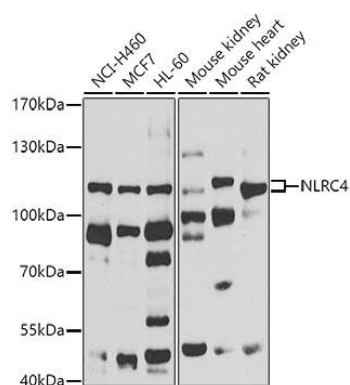
Immunogen:

Recombinant fusion protein containing a sequence corresponding to amino acids 1-250 of human NLRC4 (NP_067032.3).

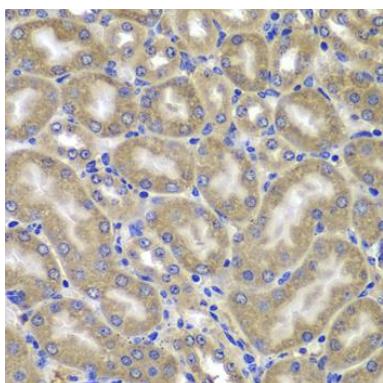
Storage:

Store at -20°C. Avoid freeze / thaw cycles. Buffer: PBS with 0.02% sodium azide, 50% glycerol, pH7.3.

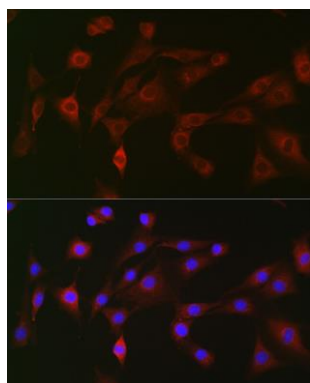
Product Images



Western blot analysis of extracts of various cell lines, using NLRC4 antibody (CAB7382) at 1:1000 dilution. Secondary antibody: HRP Goat Anti-Rabbit IgG (H+L) (CABS014) at 1:10000 dilution. Lysates/proteins: 25ug per lane. Blocking buffer: 3% nonfat dry milk in TBST. Detection: ECL Basic Kit (CABM00020). Exposure time: 90s.



Immunohistochemistry of paraffin-embedded mouse kidney using NLRC4 antibody (CAB7382) at dilution of 1:100 (40x lens).



Immunofluorescence analysis of NIH-3T3 cells using NLRC4 Rabbit pAb (CAB7382) at dilution of 1:100 (40x lens). Blue: DAPI for nuclear staining.