

LGR6 Rabbit Polyclonal Antibody



CAB7383

Product Information

Size:

20uL, 50uL, 100uL, 200uL

Observed MW:

104kDa

Calculated MW:

89kDa/99kDa/104kDa

Applications:

WB IHC

Reactivity:

Human, Mouse, Rat

Protein Background

This gene encodes a member of the leucine-rich repeat-containing subgroup of the G protein-coupled 7-transmembrane protein superfamily. The encoded protein is a glycoprotein hormone receptor with a large N-terminal extracellular domain that contains leucine-rich repeats important for the formation of a horseshoe-shaped interaction motif for ligand binding. Alternative splicing of this gene results in multiple transcript variants.

Immunogen information

Gene ID:

59352

Uniprot

Q9HBX8

Synonyms:

LGR6; GPCR; VTS20631

Antibody Information

Recommended dilutions:

WB 1:500 - 1:2000 IHC 1:50
- 1:200

Source:

Rabbit

Isotype:

IgG

Purification:

Affinity purification

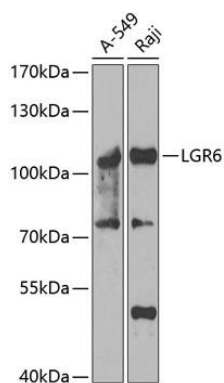
Immunogen:

Recombinant fusion protein containing a sequence corresponding to amino acids 350-510 of human LGR6 (NP_067649.2).

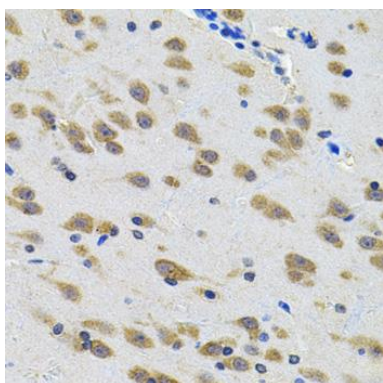
Storage:

Store at -20°C. Avoid freeze / thaw cycles. Buffer: PBS with 0.02% sodium azide, 50% glycerol, pH7.3.

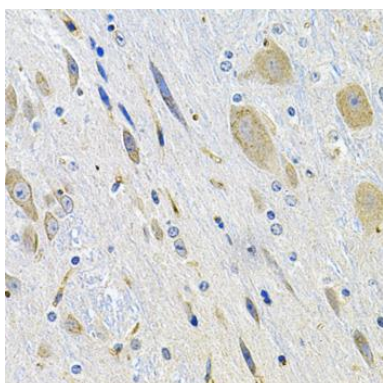
Product Images



Western blot analysis of extracts of various cell lines, using LGR6 antibody (CAB7383) at 1:1000 dilution. Secondary antibody: HRP Goat Anti-Rabbit IgG (H+L) (CABS014) at 1:10000 dilution. Lysates/proteins: 25ug per lane. Blocking buffer: 3% nonfat dry milk in TBST. Detection: ECL Enhanced Kit (CABM00021). Exposure time: 90s.



Immunohistochemistry of paraffin-embedded rat brain using LGR6 Antibody (CAB7383) at dilution of 1:100 (40x lens).



Immunohistochemistry of paraffin-embedded mouse brain using LGR6 Antibody (CAB7383) at dilution of 1:100 (40x lens).