

NAA40 Rabbit Polyclonal Antibody



CAB7385

Product Information

Size:

20uL, 50uL, 100uL, 200uL

Observed MW:

Refer to figures

Calculated MW:

22kDa/24kDa/27kDa

Applications:

WB IF

Reactivity:

Human, Mouse, Rat

Antibody Information

Recommended dilutions:

WB 1:500 - 1:2000 IF 1:50 - 1:100

Source:

Rabbit

Isotype:

IgG

Purification:

Affinity purification

Protein Background

Immunogen information

Gene ID:

79829

Uniprot

Q86UY6

Synonyms:

NAA40; NAT11; NatD; PATT1; hNatD

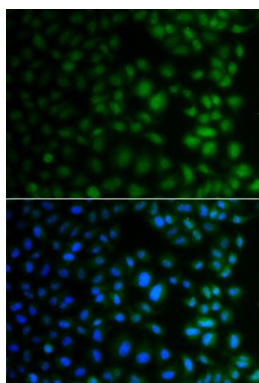
Immunogen:

Recombinant fusion protein containing a sequence corresponding to amino acids 1-237 of human NAA40 (NP_079047.2).

Storage:

Store at -20°C. Avoid freeze / thaw cycles. Buffer: PBS with 0.02% sodium azide, 50% glycerol, pH7.3.

Product Images



Immunofluorescence analysis of A549 cells using NAA40 antibody (CAB7385). Blue: DAPI for nuclear staining.