

# NAA60 Rabbit Polyclonal Antibody



CAB7386

---

## Product Information

### Size:

20uL, 50uL, 100uL, 200uL

### Observed MW:

27kDa

### Calculated MW:

19kDa/20kDa/27kDa/28kDa

### Applications:

WB IHC IF

### Reactivity:

Human, Mouse, Rat

## Protein Background

This gene encodes an enzyme that localizes to the Golgi apparatus, where it transfers an acetyl group to the N-terminus of free proteins. This enzyme acts on histones, and its activity is important for chromatin assembly and chromosome integrity. Alternative splicing and the use of alternative promoters results in multiple transcript variants. The upstream promoter is located in a differentially methylated region (DMR) and undergoes imprinting; transcript variants originating from this position are expressed from the maternal allele.

## Immunogen information

### Gene ID:

79903

### Uniprot

Q9H7X0

### Synonyms:

NAA60; HAT4; NAT15; NatF; hNaa60

## Antibody Information

### Recommended dilutions:

WB 1:500 - 1:2000 IHC 1:50  
- 1:200 IF 1:50 - 1:200

### Source:

Rabbit

### Isotype:

IgG

### Purification:

Affinity purification

### Immunogen:

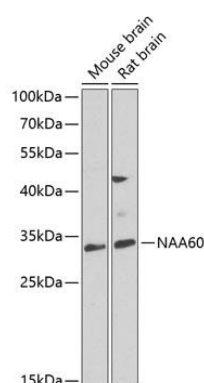
Recombinant fusion protein containing a sequence corresponding to amino acids 1-242 of human NAA60 (NP\_079121.1).

### Storage:

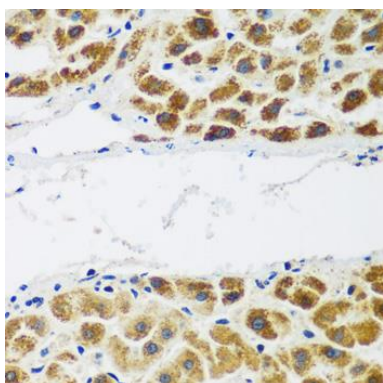
Store at -20°C. Avoid freeze / thaw cycles. Buffer: PBS with 0.02% sodium azide, 50% glycerol, pH7.3.

## Product Images

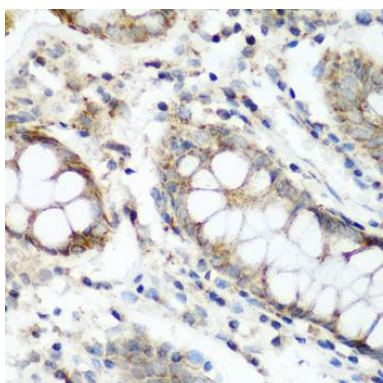
---



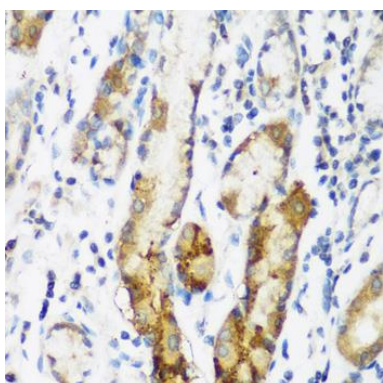
Western blot analysis of extracts of various cell lines, using NAA60 antibody (CAB7386) at 1:1000 dilution. Secondary antibody: HRP Goat Anti-Rabbit IgG (H+L) (CABS014) at 1:10000 dilution. Lysates/proteins: 25ug per lane. Blocking buffer: 3% nonfat dry milk in TBST. Detection: ECL Enhanced Kit (CABM00021). Exposure time: 90s.



Immunohistochemistry of paraffin-embedded human liver cancer using NAA60 antibody (CAB7386) at dilution of 1:200 (40x lens).



Immunohistochemistry of paraffin-embedded human colon using NAA60 antibody (CAB7386) at dilution of 1:200 (40x lens).



Immunohistochemistry of paraffin-embedded human gastric using NAA60 antibody (CAB7386) at dilution of 1:200 (40x lens).