

# NAA50 Rabbit Polyclonal Antibody



CAB7387

## Product Information

### Size:

20uL, 50uL, 100uL, 200uL

### Observed MW:

19kDa

### Calculated MW:

9kDa/19kDa

### Applications:

WB IHC IF

### Reactivity:

Human, Mouse, Rat

## Antibody Information

### Recommended dilutions:

WB 1:500 - 1:2000 IHC 1:50  
- 1:200 IF 1:50 - 1:200

### Source:

Rabbit

### Isotype:

IgG

### Purification:

Affinity purification

## Protein Background

### Immunogen information

#### Gene ID:

80218

#### Uniprot

Q9GZZ1

#### Synonyms:

NAA50; MAK3; NAT13; NAT13P; NAT5; NAT5P; SAN

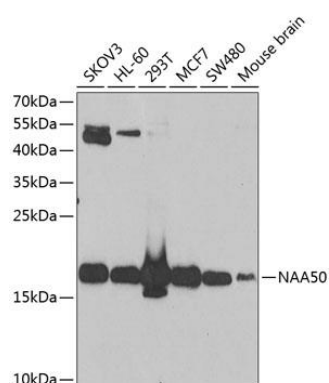
#### Immunogen:

Recombinant fusion protein containing a sequence corresponding to amino acids 1-169 of human NAA50 (NP\_079422.1).

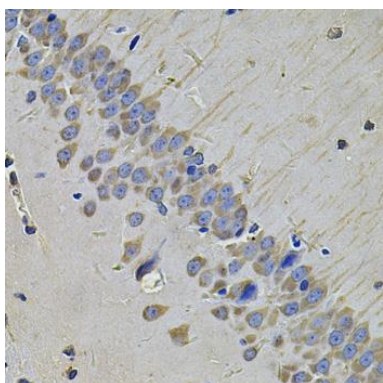
#### Storage:

Store at -20°C. Avoid freeze / thaw cycles. Buffer: PBS with 0.02% sodium azide, 50% glycerol, pH7.3.

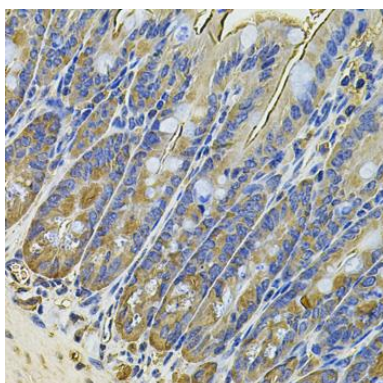
## Product Images



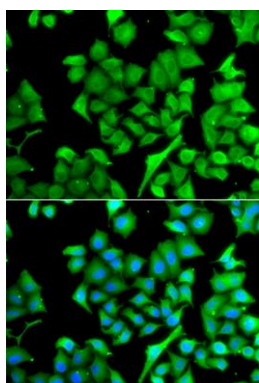
Western blot analysis of extracts of various cell lines, using NAA50 antibody (CAB7387) at 1:1000 dilution. Secondary antibody: HRP Goat Anti-Rabbit IgG (H+L) (CABS014) at 1:10000 dilution. Lysates/proteins: 25ug per lane. Blocking buffer: 3% nonfat dry milk in TBST. Detection: ECL Enhanced Kit (CABM00021). Exposure time: 90s.



Immunohistochemistry of paraffin-embedded rat brain using NAA50 Antibody (CAB7387) at dilution of 1:100 (40x lens).



Immunohistochemistry of paraffin-embedded mouse intestine using NAA50 Antibody (CAB7387) at dilution of 1:100 (40x lens).



Immunofluorescence analysis of A549 cells using NAA50 antibody (CAB7387). Blue: DAPI for nuclear staining.