

RASSF5 Rabbit Polyclonal Antibody



CAB7389

Product Information

Size:

20uL, 50uL, 100uL, 200uL

Observed MW:

37kDa, 45kDa

Calculated MW:

30kDa/37kDa/47kDa

Applications:

WB IHC

Reactivity:

Human, Mouse, Rat

Protein Background

This gene is a member of the Ras association domain family. It functions as a tumor suppressor, and is inactivated in a variety of cancers. The encoded protein localizes to centrosomes and microtubules, and associates with the GTP-activated forms of Ras, Rap1, and several other Ras-like small GTPases. The protein regulates lymphocyte adhesion and suppresses cell growth in response to activated Rap1 or Ras. Multiple transcript variants encoding different isoforms have been found for this gene.

Immunogen information

Gene ID:

83593

Uniprot

Q8WWW0

Synonyms:

RASSF5; Maxp1; NORE1; NORE1A; NORE1B; RAPL; RASSF3

Antibody Information

Recommended dilutions:

WB 1:500 - 1:2000 IHC 1:50 - 1:200

Source:

Rabbit

Isotype:

IgG

Purification:

Affinity purification

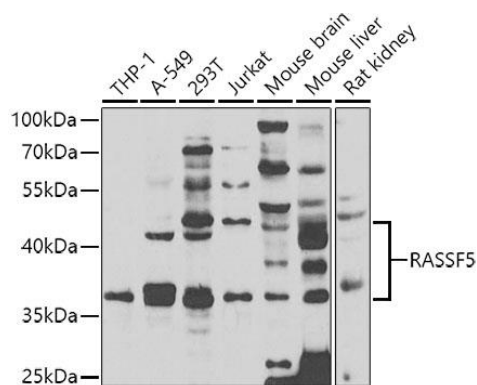
Immunogen:

Recombinant fusion protein containing a sequence corresponding to amino acids 1-265 of human RASSF5 (NP_872606.1).

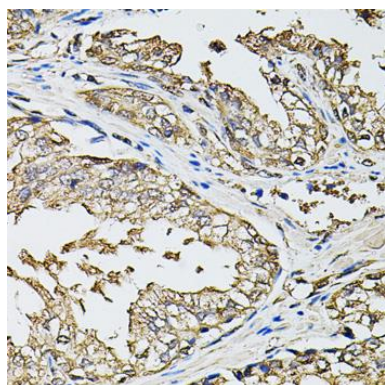
Storage:

Store at -20°C. Avoid freeze / thaw cycles. Buffer: PBS with 0.02% sodium azide, 50% glycerol, pH7.3.

Product Images



Western blot analysis of extracts of various cell lines, using RASSF5 antibody (CAB7389) at 1:1000 dilution. Secondary antibody: HRP Goat Anti-Rabbit IgG (H+L) (CABS014) at 1:10000 dilution. Lysates/proteins: 25ug per lane. Blocking buffer: 3% nonfat dry milk in TBST. Detection: ECL Basic Kit (CABM00020). Exposure time: 90s.



Immunohistochemistry of paraffin-embedded human prostate using RASSF5 antibody (CAB7389) at dilution of 1:100 (40x lens).