

ATG10 Rabbit Polyclonal Antibody



CAB7390

Product Information

Size:

20uL, 50uL, 100uL, 200uL

Observed MW:

25kDa

Calculated MW:

14kDa/25kDa

Applications:

WB IHC

Reactivity:

Human, Mouse, Rat

Antibody Information

Recommended dilutions:

WB 1:500 - 1:2000 IHC 1:50
- 1:200

Source:

Rabbit

Isotype:

IgG

Purification:

Affinity purification

Protein Background

Immunogen information

Gene ID:

83734

Uniprot

Q9H0Y0

Synonyms:

ATG10; APG10; APG10L; pp12616

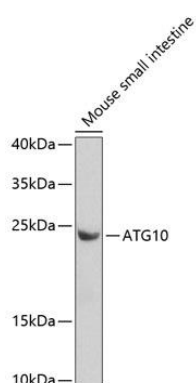
Immunogen:

Recombinant fusion protein containing a sequence corresponding to amino acids 1-220 of human ATG10 (NP_113670.1).

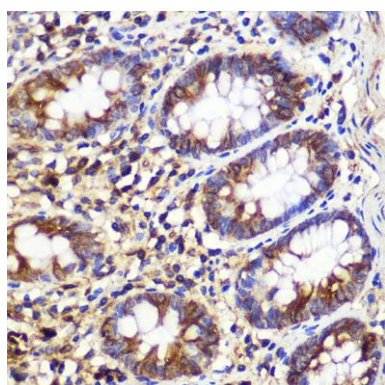
Storage:

Store at -20°C. Avoid freeze / thaw cycles. Buffer: PBS with 0.02% sodium azide, 50% glycerol, pH7.3.

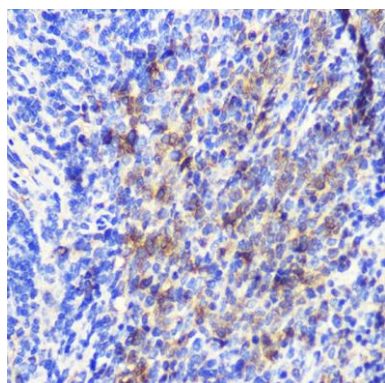
Product Images



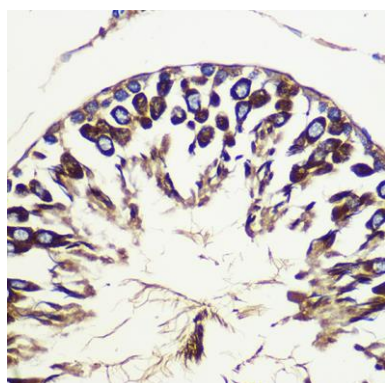
Western blot analysis of extracts of mouse small intestine, using ATG10 antibody (CAB7390) at 1:1000 dilution. Secondary antibody: HRP Goat Anti-Rabbit IgG (H+L) (CABS014) at 1:10000 dilution. Lysates/proteins: 25ug per lane. Blocking buffer: 3% nonfat dry milk in TBST. Detection: ECL Basic Kit (CABM00020). Exposure time: 90s.



Immunohistochemistry of paraffin-embedded Human colon using ATG10 Rabbit pAb (CAB7390) at dilution of 1:100 (40x lens).



Immunohistochemistry of paraffin-embedded Mouse spleen using ATG10 Rabbit pAb (CAB7390) at dilution of 1:100 (40x lens).



Immunohistochemistry of paraffin-embedded Rat testis using ATG10 Rabbit pAb (CAB7390) at dilution of 1:100 (40x lens).