

# ATG9B Rabbit Polyclonal Antibody



CAB7406

## Product Information

### Size:

20uL, 50uL, 100uL, 200uL

### Observed MW:

101kDa

### Calculated MW:

36kDa/44kDa/101kDa

### Applications:

WB IHC

### Reactivity:

Human, Mouse, Rat

## Antibody Information

### Recommended dilutions:

WB 1:500 - 1:2000 IHC 1:50  
- 1:200

### Source:

Rabbit

### Isotype:

IgG

### Purification:

Affinity purification

## Protein Background

This gene functions in the regulation of autophagy, a lysosomal degradation pathway. This gene also functions as an antisense transcript in the posttranscriptional regulation of the endothelial nitric oxide synthase 3 gene, which has 3' overlap with this gene on the opposite strand. Mutations in this gene and disruption of the autophagy process have been associated with multiple cancers. Alternative splicing results in multiple transcript variants.

## Immunogen information

### Gene ID:

285973

### Uniprot

Q674R7

### Synonyms:

ATG9B; APG9L2; NOS3AS; SONE

### Immunogen:

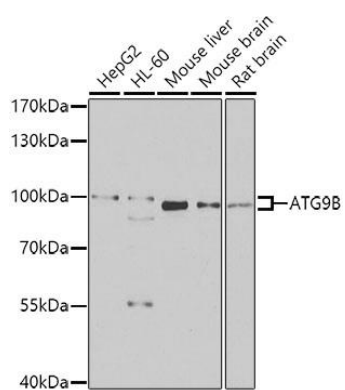
Recombinant fusion protein containing a sequence corresponding to amino acids 715-924 of human ATG9B (NP\_775952.4).

### Storage:

Store at -20°C. Avoid freeze / thaw cycles. Buffer: PBS with 0.02% sodium azide, 50% glycerol, pH7.3.

## Product Images

---



Western blot analysis of extracts of various cell lines, using ATG9B antibody (CAB7406) at 1:1000 dilution. Secondary antibody: HRP Goat Anti-Rabbit IgG (H+L) (CABS014) at 1:10000 dilution. Lysates/proteins: 25ug per lane. Blocking buffer: 3% nonfat dry milk in TBST. Detection: ECL Enhanced Kit (CABM00021). Exposure time: 90s.