

# JMJD7 Rabbit Polyclonal Antibody



CAB7408

## Product Information

### Size:

20uL, 50uL, 100uL, 200uL

### Observed MW:

36kDa

### Calculated MW:

35kDa

### Applications:

WB IHC IF

### Reactivity:

Human, Mouse, Rat

## Protein Background

This gene encodes a highly conserved protein with a JmjC domain, which are part of the cupin metalloenzyme superfamily. JmjC proteins may function as 2-oxoglutarate-Fe(II)-dependent dioxygenases. Most tissues also express read-through transcripts from this gene into the downstream phospholipase A2, group IVB (cytosolic) gene, some of which may encode fusion proteins combining the N-terminus of this protein with the phospholipase A2, group IVB protein.

## Immunogen information

### Gene ID:

100137047

### Uniprot

POC870

### Synonyms:

JMJD7

## Antibody Information

### Recommended dilutions:

WB 1:500 - 1:2000 IHC 1:50  
- 1:200 IF 1:50 - 1:200

### Source:

Rabbit

### Isotype:

IgG

### Purification:

Affinity purification

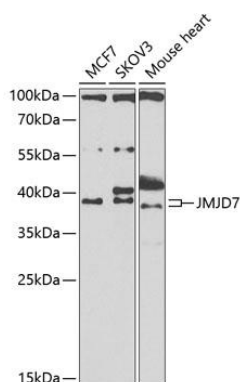
### Immunogen:

Recombinant fusion protein containing a sequence corresponding to amino acids 1-316 of human JMJD7 (NP\_001108104.1).

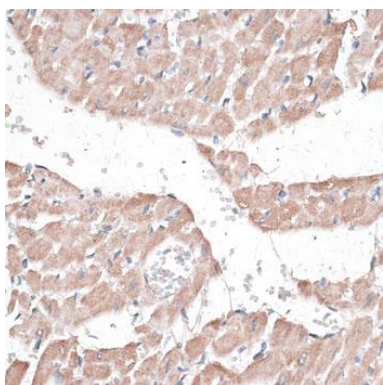
### Storage:

Store at -20°C. Avoid freeze / thaw cycles. Buffer: PBS with 0.02% sodium azide, 50% glycerol, pH7.3.

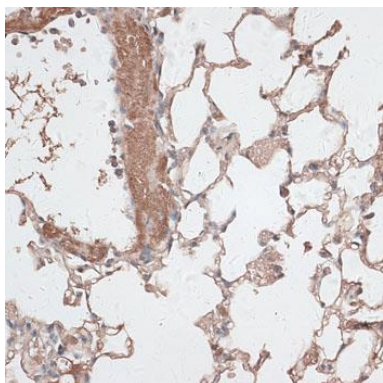
## Product Images



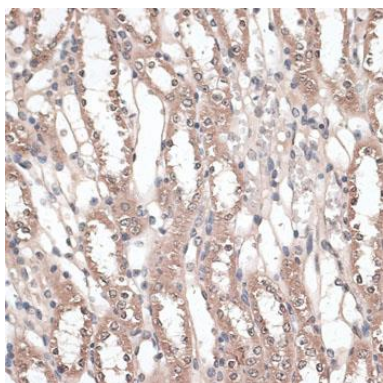
Western blot analysis of extracts of various cell lines, using JMJD7 antibody (CAB7408) at 1:1000 dilution. Secondary antibody: HRP Goat Anti-Rabbit IgG (H+L) (CABS014) at 1:10000 dilution. Lysates/proteins: 25ug per lane. Blocking buffer: 3% nonfat dry milk in TBST. Detection: ECL Enhanced Kit (CABM00021). Exposure time: 90s.



Immunohistochemistry of paraffin-embedded rat heart using JMJD7 antibody (CAB7408) at dilution of 1:100 (40x lens).



Immunohistochemistry of paraffin-embedded mouse lung using JMJD7 antibody (CAB7408) at dilution of 1:100 (40x lens).



Immunohistochemistry of paraffin-embedded mouse kidney using JMJD7 antibody (CAB7408) at dilution of 1:100 (40x lens).