

SLC8A1 Rabbit Polyclonal Antibody



CAB7419

Product Information

Size:

20uL, 50uL, 100uL, 200uL

Observed MW:

109kDa

Calculated MW:

104kDa/107kDa/108kDa

Applications:

WB

Reactivity:

Human

Antibody Information

Recommended dilutions:

WB 1:500 - 1:2000

Source:

Rabbit

Isotype:

IgG

Purification:

Affinity purification

Protein Background

Immunogen information

Gene ID:

6546

Uniprot

P32418

Synonyms:

SLC8A1; NCX1

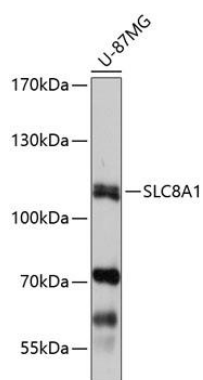
Immunogen:

Recombinant fusion protein containing a sequence corresponding to amino acids 250-520 of human SLC8A1 (NP_066920.1).

Storage:

Store at -20°C. Avoid freeze / thaw cycles. Buffer: PBS with 0.02% sodium azide, 50% glycerol, pH7.3.

Product Images



Western blot analysis of extracts of U-87MG cells, using SLC8A1 antibody (CAB7419) at 1:1000 dilution. Secondary antibody: HRP Goat Anti-Rabbit IgG (H+L) (CABS014) at 1:10000 dilution. Lysates/proteins: 25ug per lane. Blocking buffer: 3% nonfat dry milk in TBST. Detection: ECL Basic Kit (CABM00020). Exposure time: 1s.