

CAPN5 Rabbit Polyclonal Antibody



CAB7428

Product Information

Size:

20uL, 50uL, 100uL, 200uL

Observed MW:

73kDa

Calculated MW:

73kDa

Applications:

WB IF

Reactivity:

Human, Mouse, Rat

Antibody Information

Recommended dilutions:

WB 1:500 - 1:2000 IF 1:50 - 1:200

Source:

Rabbit

Isotype:

IgG

Purification:

Affinity purification

Protein Background

Calpains are calcium-dependent cysteine proteases involved in signal transduction in a variety of cellular processes. A functional calpain protein consists of an invariant small subunit and 1 of a family of large subunits. CAPN5 is one of the large subunits. Unlike some of the calpains, CAPN5 and CAPN6 lack a calmodulin-like domain IV. Because of the significant similarity to *Caenorhabditis elegans* sex determination gene *tra-3*, CAPN5 is also called as HTRA3.

Immunogen information

Gene ID:

726

Uniprot

O15484

Synonyms:

CAPN5; ADNIV; HTRA3; VRNI; nCL-3; calpain-5

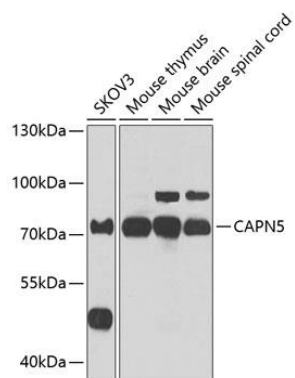
Immunogen:

Recombinant fusion protein containing a sequence corresponding to amino acids 361-640 of human CAPN5 (NP_004046.2).

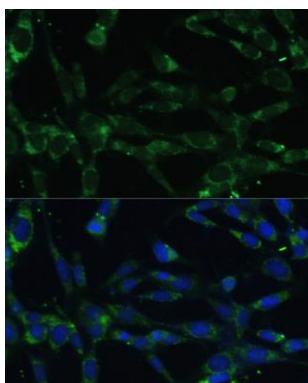
Storage:

Store at -20°C. Avoid freeze / thaw cycles. Buffer: PBS with 0.02% sodium azide, 50% glycerol, pH7.3.

Product Images



Western blot analysis of extracts of various cell lines, using CAPN5 antibody (CAB7428) at 1:1000 dilution. Secondary antibody: HRP Goat Anti-Rabbit IgG (H+L) (CABS014) at 1:10000 dilution. Lysates/proteins: 25ug per lane. Blocking buffer: 3% nonfat dry milk in TBST. Detection: ECL Enhanced Kit (CABM00021). Exposure time: 30s.



Immunofluorescence analysis of NIH-3T3 cells using CAPN5 antibody (CAB7428) at dilution of 1:100. Blue: DAPI for nuclear staining.