

# DFNA5/GSDME Rabbit Polyclonal Antibody



CAB7432

---

## Product Information

### Size:

20uL, 50uL, 100uL, 200uL

### Observed MW:

55kDa

### Calculated MW:

10kDa/36kDa/54kDa

### Applications:

WB IHC IF

### Reactivity:

Human, Mouse, Rat

## Protein Background

Hearing impairment is a heterogeneous condition with over 40 loci described. The protein encoded by this gene is expressed in fetal cochlea, however, its function is not known. Nonsyndromic hearing impairment is associated with a mutation in this gene. Three transcript variants encoding two different isoforms have been found for this gene.

## Immunogen information

### Gene ID:

1687

### Uniprot

O60443

### Synonyms:

DFNA5; ICERE-1; GSDME

## Antibody Information

### Recommended dilutions:

WB 1:500 - 1:2000 IHC 1:50  
- 1:100 IF 1:50 - 1:100

### Source:

Rabbit

### Isotype:

IgG

### Purification:

Affinity purification

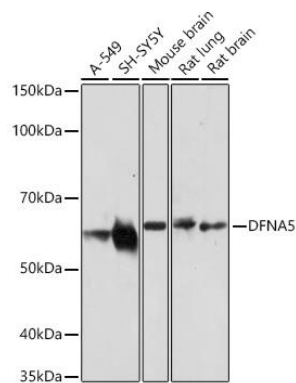
### Immunogen:

Recombinant fusion protein containing a sequence corresponding to amino acids 1-260 of human DFNA5/GSDME (NP\_004394.1).

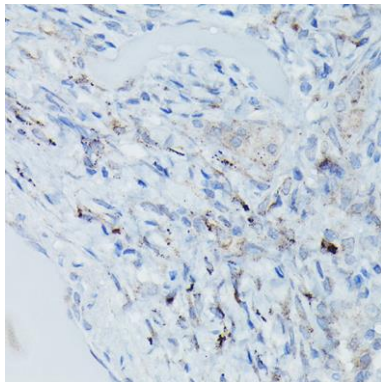
### Storage:

Store at -20°C. Avoid freeze / thaw cycles. Buffer: PBS with 0.02% sodium azide, 50% glycerol, pH7.3.

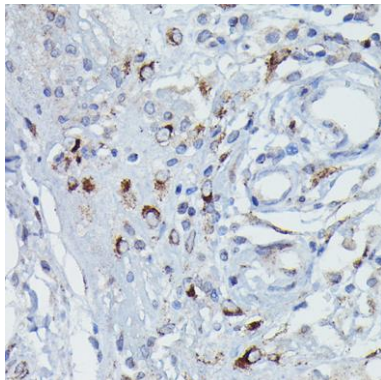
## Product Images



Western blot analysis of extracts of various cell lines, using DFNA5/GSDME antibody (CAB7432) at 1:1000 dilution. Secondary antibody: HRP Goat Anti-Rabbit IgG (H+L) (CABS014) at 1:10000 dilution. Lysates/proteins: 25ug per lane. Blocking buffer: 3% nonfat dry milk in TBST. Detection: ECL Basic Kit (CABM00020). Exposure time: 90s.



Immunohistochemistry of paraffin-embedded Human pulmonary tuberculosis using DFNA5/GSDME Rabbit pAb (CAB7432) at dilution of 1:50 (40x lens).



Immunohistochemistry of paraffin-embedded Human pancreatic panniculitis using DFNA5/GSDME Rabbit pAb (CAB7432) at dilution of 1:50 (40x lens).