

IFRD1 Rabbit Polyclonal Antibody



CAB7439

Product Information

Size:

20uL, 50uL, 100uL, 200uL

Observed MW:

45kDa, 50kDa

Calculated MW:

45kDa/50kDa

Applications:

WB IHC IF

Reactivity:

Human, Mouse, Rat

Antibody Information

Recommended dilutions:

WB 1:500 - 1:2000 IHC 1:50
- 1:100 IF 1:50 - 1:100

Source:

Rabbit

Isotype:

IgG

Purification:

Affinity purification

Protein Background

This gene is an immediate early gene that encodes a protein related to interferon-gamma. This protein may function as a transcriptional co-activator/repressor that controls the growth and differentiation of specific cell types during embryonic development and tissue regeneration. Mutations in this gene are associated with sensory/motor neuropathy with ataxia. This gene may also be involved in modulating the pathogenesis of cystic fibrosis lung disease. Alternate splicing results in multiple transcript variants.

Immunogen information

Gene ID:

3475

Uniprot

O00458

Synonyms:

IFRD1; PC4; TIS7

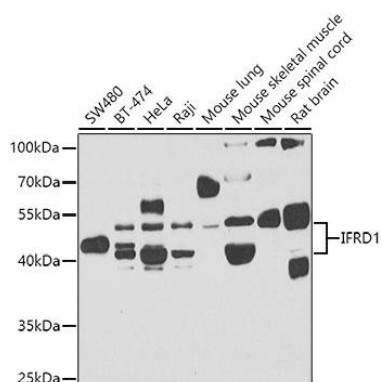
Immunogen:

Recombinant fusion protein containing a sequence corresponding to amino acids 1-240 of human IFRD1 (NP_001541.2).

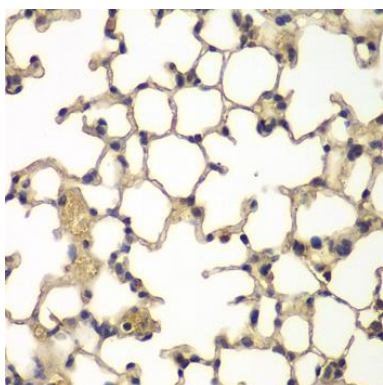
Storage:

Store at -20°C. Avoid freeze / thaw cycles. Buffer: PBS with 0.02% sodium azide, 50% glycerol, pH7.3.

Product Images



Western blot analysis of extracts of various cell lines, using IFRD1 antibody (CAB7439) at 1:1000 dilution. Secondary antibody: HRP Goat Anti-Rabbit IgG (H+L) (CABS014) at 1:10000 dilution. Lysates/proteins: 25ug per lane. Blocking buffer: 3% nonfat dry milk in TBST. Detection: ECL Basic Kit (CABM00020). Exposure time: 90s.



Immunohistochemistry of paraffin-embedded mouse lung using IFRD1 antibody (CAB7439) at dilution of 1:100 (40x lens).