

NME2 Rabbit Polyclonal Antibody



CAB7443

Product Information

Size:

20uL, 50uL, 100uL, 200uL

Observed MW:

17kDa

Calculated MW:

17kDa/30kDa

Applications:

WB IHC IF

Reactivity:

Human, Mouse, Rat

Protein Background

Nucleoside diphosphate kinase (NDK) exists as a hexamer composed of 'A' (encoded by NME1) and 'B' (encoded by this gene) isoforms. Multiple alternatively spliced transcript variants have been found for this gene. Read-through transcription from the neighboring upstream gene (NME1) generates naturally-occurring transcripts (NME1-NME2) that encode a fusion protein comprised of sequence sharing identity with each individual gene product.

Immunogen information

Gene ID:

4831

Uniprot

P22392

Synonyms:

NME2; NDKB; NDPK-B; NDPKB; NM23-H2; NM23B; PUF

Antibody Information

Recommended dilutions:

WB 1:500 - 1:2000 IHC 1:50
- 1:200 IF 1:50 - 1:200

Source:

Rabbit

Isotype:

IgG

Purification:

Affinity purification

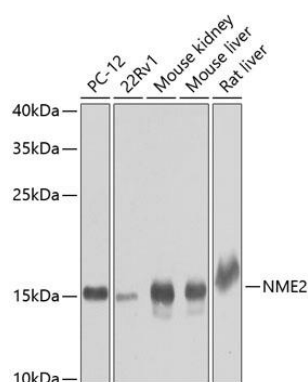
Immunogen:

Recombinant fusion protein containing a sequence corresponding to amino acids 1-152 of human NME2 (NP_001018148.1).

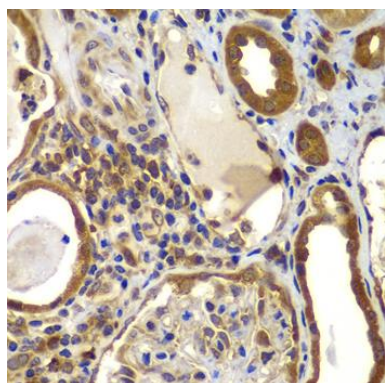
Storage:

Store at -20°C. Avoid freeze / thaw cycles. Buffer: PBS with 0.02% sodium azide, 50% glycerol, pH7.3.

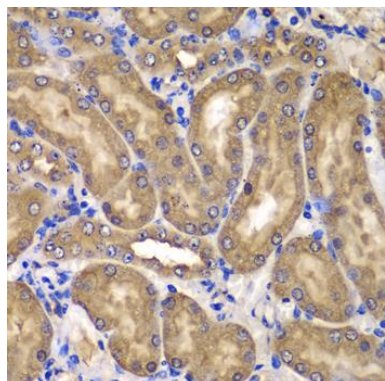
Product Images



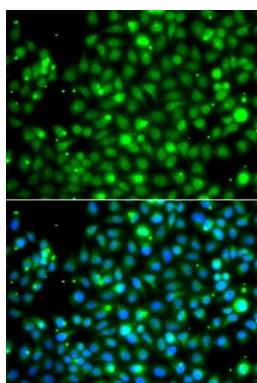
Western blot analysis of extracts of various cell lines, using NME2 antibody (CAB7443) at 1:1000 dilution. Secondary antibody: HRP Goat Anti-Rabbit IgG (H+L) (CABS014) at 1:10000 dilution. Lysates/proteins: 25ug per lane. Blocking buffer: 3% nonfat dry milk in TBST. Detection: ECL Basic Kit (CABM00020). Exposure time: 30s.



Immunohistochemistry of paraffin-embedded human kidney using NME2 antibody (CAB7443) at dilution of 1:100 (40x lens).



Immunohistochemistry of paraffin-embedded mouse kidney using NME2 antibody (CAB7443) at dilution of 1:100 (40x lens).



Immunofluorescence analysis of A549 cells using NME2 antibody (CAB7443). Blue: DAPI for nuclear staining.