

NR2E1 Rabbit Polyclonal Antibody



CAB7455

Product Information

Size:

20uL, 50uL, 100uL, 200uL

Observed MW:

43kDa

Calculated MW:

42kDa/46kDa

Applications:

WB IF IP

Reactivity:

Human, Mouse

Protein Background

The protein encoded by this gene is an orphan receptor involved in retinal development. The encoded protein also regulates adult neural stem cell proliferation and may be involved in control of aggressive behavior. Two transcript variants encoding different isoforms have been found for this gene.

Immunogen information

Gene ID:

7101

Uniprot

Q9Y466

Synonyms:

NR2E1; TLL; TLX; XTLL

Antibody Information

Recommended dilutions:

WB 1:500 - 1:2000 IF 1:50 -
1:100 IP 1:50 - 1:100

Source:

Rabbit

Isotype:

IgG

Purification:

Affinity purification

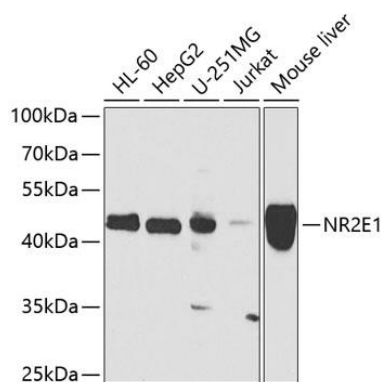
Immunogen:

Recombinant fusion protein containing a sequence corresponding to amino acids 106-385 of human NR2E1 (NP_003260.1).

Storage:

Store at -20°C. Avoid freeze / thaw cycles. Buffer: PBS with 0.02% sodium azide, 50% glycerol, pH7.3.

Product Images



Western blot analysis of extracts of various cell lines, using NR2E1 antibody (CAB7455) at 1:1000 dilution. Secondary antibody: HRP Goat Anti-Rabbit IgG (H+L) (CABS014) at 1:10000 dilution. Lysates/proteins: 25ug per lane. Blocking buffer: 3% nonfat dry milk in TBST. Detection: ECL Basic Kit (CABM00020). Exposure time: 90s.