

# VAMP3 Rabbit Polyclonal Antibody



CAB7457

---

## Product Information

**Size:**

20uL, 50uL, 100uL, 200uL

**Observed MW:**

15kDa

**Calculated MW:**

11kDa

**Applications:**

WB

**Reactivity:**

Human, Mouse, Rat

## Antibody Information

**Recommended dilutions:**

WB 1:500 - 1:2000

**Source:**

Rabbit

**Isotype:**

IgG

**Purification:**

Affinity purification

## Protein Background

Synaptobrevins/VAMPs, syntaxins, and the 25-kD synaptosomal-associated protein are the main components of a protein complex involved in the docking and/or fusion of synaptic vesicles with the presynaptic membrane. This gene is a member of the vesicle-associated membrane protein (VAMP)/synaptobrevin family. Because of its high homology to other known VAMPs, its broad tissue distribution, and its subcellular localization, the protein encoded by this gene was shown to be the human equivalent of the rodent cellubrevin. In platelets the protein resides on a compartment that is not mobilized to the plasma membrane on calcium or thrombin stimulation.

## Immunogen information

**Gene ID:**

9341

**Uniprot**

Q15836

**Synonyms:**

VAMP3; CEB

**Immunogen:**

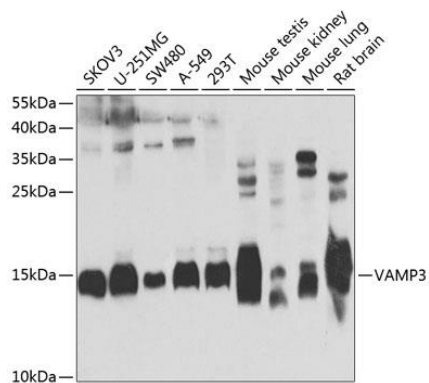
Recombinant fusion protein containing a sequence corresponding to amino acids 1-80 of human VAMP3 (NP\_004772.1).

**Storage:**

Store at -20°C. Avoid freeze / thaw cycles. Buffer: PBS with 0.02% sodium azide, 50% glycerol, pH7.3.

## Product Images

---



Western blot analysis of extracts of various cell lines, using VAMP3 antibody (CAB7457) at 1:1000 dilution. Secondary antibody: HRP Goat Anti-Rabbit IgG (H+L) (CABS014) at 1:10000 dilution. Lysates/proteins: 25ug per lane. Blocking buffer: 3% nonfat dry milk in TBST. Detection: ECL Enhanced Kit (CABM00021). Exposure time: 5s.