

LDB3 Rabbit Polyclonal Antibody



CAB7462

Product Information

Size:

20uL, 50uL, 100uL, 200uL

Observed MW:

50kDa/90kDa

Calculated MW:

30kDa/35kDa/42kDa/50kDa/
66kDa/77kDa/78kDa

Applications:

WB IHC IF

Reactivity:

Human, Mouse, Rat

Antibody Information

Recommended dilutions:

WB 1:500 - 1:2000 IHC 1:50
- 1:200 IF 1:50 - 1:200

Source:

Rabbit

Isotype:

IgG

Purification:

Affinity purification

Protein Background

This gene encodes a PDZ domain-containing protein. PDZ motifs are modular protein-protein interaction domains consisting of 80-120 amino acid residues. PDZ domain-containing proteins interact with each other in cytoskeletal assembly or with other proteins involved in targeting and clustering of membrane proteins. The protein encoded by this gene interacts with alpha-actinin-2 through its N-terminal PDZ domain and with protein kinase C via its C-terminal LIM domains. The LIM domain is a cysteine-rich motif defined by 50-60 amino acids containing two zinc-binding modules. This protein also interacts with all three members of the myozenin family. Mutations in this gene have been associated with myofibrillar myopathy and dilated cardiomyopathy. Alternatively spliced transcript variants encoding different isoforms have been identified; all isoforms have N-terminal PDZ domains while only longer isoforms (1, 2 and 5) have C-terminal LIM domains.

Immunogen information

Gene ID:

11155

Uniprot

O75112

Synonyms:

LDB3; CMD1C; CMH24; CMPD3; CYPHER; LDB3Z1; LDB3Z4; LVNC3;
MFM4; ORACLE; PDLIM6; ZASP

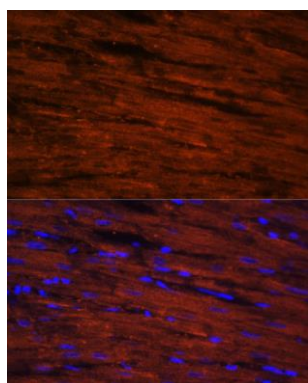
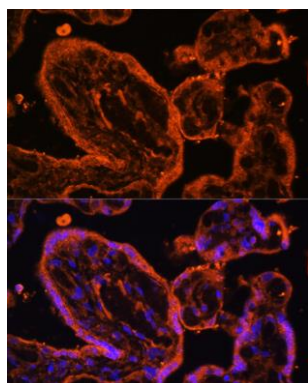
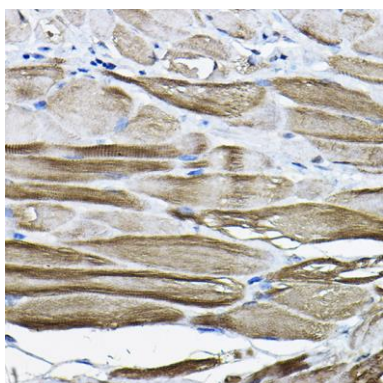
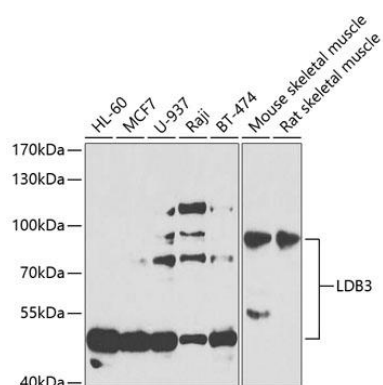
Immunogen:

Recombinant fusion protein containing a sequence corresponding to amino acids 1-283 of human LDB3 (NP_001073585.1).

Storage:

Store at -20°C. Avoid freeze / thaw cycles. Buffer: PBS with 0.02% sodium azide, 50% glycerol, pH7.3.

Product Images



Western blot analysis of extracts of various cell lines, using LDB3 antibody (CAB7462) at 1:1000 dilution. Secondary antibody: HRP Goat Anti-Rabbit IgG (H+L) (CABS014) at 1:10000 dilution. Lysates/proteins: 25ug per lane. Blocking buffer: 3% nonfat dry milk in TBST. Detection: ECL Basic Kit (CABM00020). Exposure time: 90s.

Immunohistochemistry of paraffin-embedded mouse stomach using LDB3 Rabbit pAb (CAB7462) at dilution of 1:200 (40x lens).

Immunofluorescence analysis of human placenta cells using LDB3 antibody (CAB7462) at dilution of 1:100. Blue: DAPI for nuclear staining.

Immunofluorescence analysis of rat heart cells using LDB3 antibody (CAB7462) at dilution of 1:100. Blue: DAPI for nuclear staining.