

RPGRIP1 Rabbit Polyclonal Antibody



CAB7477

Product Information

Size:

20uL, 50uL, 100uL, 200uL

Observed MW:

170kDa

Calculated MW:

66kDa/70kDa/74kDa/76kDa/
103kDa/146kDa

Applications:

WB

Reactivity:

Human, Mouse, Rat

Antibody Information

Recommended dilutions:

WB 1:500 - 1:2000

Source:

Rabbit

Isotype:

IgG

Purification:

Affinity purification

Protein Background

This gene encodes a photoreceptor protein that interacts with retinitis pigmentosa GTPase regulator protein and is a key component of cone and rod photoreceptor cells. Mutations in this gene lead to autosomal recessive congenital blindness.

Immunogen information

Gene ID:

57096

Uniprot

Q96KN7

Synonyms:

RPGRIP1; CORD13; LCA6; RGI1; RGRIP; RPGRIP; RPGRIP1d

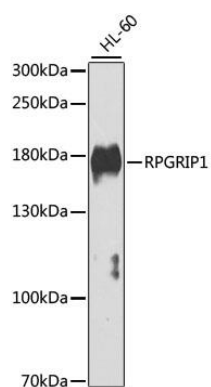
Immunogen:

Recombinant fusion protein containing a sequence corresponding to amino acids 400-580 of human RPGRIP1 (NP_065099.3).

Storage:

Store at -20°C. Avoid freeze / thaw cycles. Buffer: PBS with 0.02% sodium azide, 50% glycerol, pH7.3.

Product Images



Western blot analysis of extracts of HL-60 cells, using RPGRIP1 antibody (CAB7477) at 1:1000 dilution. Secondary antibody: HRP Goat Anti-Rabbit IgG (H+L) (CABS014) at 1:10000 dilution. Lysates/proteins: 25ug per lane. Blocking buffer: 3% nonfat dry milk in TBST. Detection: ECL Enhanced Kit (CABM00021). Exposure time: 30s.