

# RRAGC Rabbit Polyclonal Antibody



CAB7479

## Product Information

### Size:

20uL, 50uL, 100uL, 200uL

### Observed MW:

44kDa

### Calculated MW:

44kDa

### Applications:

WB IHC IF

### Reactivity:

Human, Mouse, Rat

## Protein Background

This gene encodes a member of the GTR/RAG GTP-binding protein family. The encoded protein is a monomeric guanine nucleotide-binding protein which forms a heterodimer with RRAGA and RRAGB and is primarily localized to the cytoplasm. The encoded protein promotes intracellular localization of the mTOR complex. Alternative splicing results in multiple transcript variants.

## Immunogen information

### Gene ID:

64121

### Uniprot

Q9HB90

### Synonyms:

RRAGC; GTR2; RAGC; TIB929

## Antibody Information

### Recommended dilutions:

WB 1:500 - 1:2000 IHC 1:50  
- 1:200 IF 1:50 - 1:200

### Source:

Rabbit

### Isotype:

IgG

### Purification:

Affinity purification

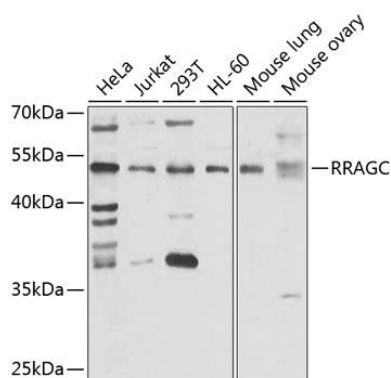
### Immunogen:

Recombinant fusion protein containing a sequence corresponding to amino acids 1-250 of human RRAGC (NP\_071440.1).

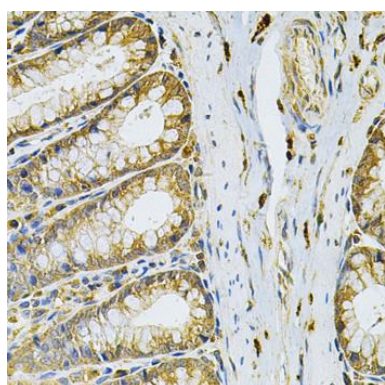
### Storage:

Store at -20°C. Avoid freeze / thaw cycles. Buffer: PBS with 0.02% sodium azide, 50% glycerol, pH7.3.

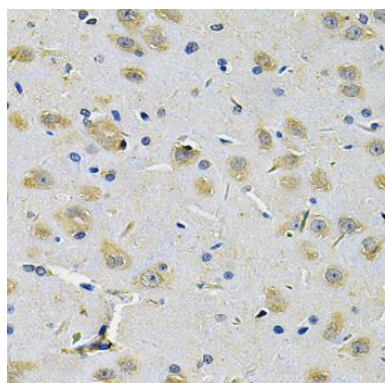
## Product Images



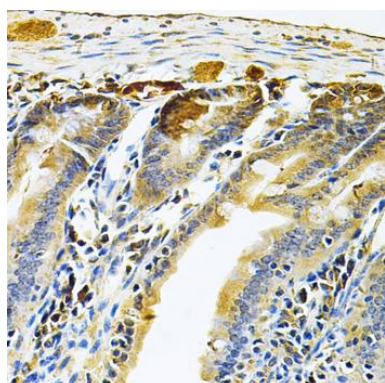
Western blot analysis of extracts of various cell lines, using RRAGC antibody (CAB7479) at 1:1000 dilution. Secondary antibody: HRP Goat Anti-Rabbit IgG (H+L) (CABS014) at 1:10000 dilution. Lysates/proteins: 25ug per lane. Blocking buffer: 3% nonfat dry milk in TBST. Detection: ECL Enhanced Kit (CABM00021). Exposure time: 30s.



Immunohistochemistry of paraffin-embedded rat intestine using RRAGC Antibody (CAB7479) at dilution of 1:100 (40x lens).



Immunohistochemistry of paraffin-embedded rat brain using RRAGC Antibody (CAB7479) at dilution of 1:100 (40x lens).



Immunohistochemistry of paraffin-embedded mouse intestine using RRAGC Antibody (CAB7479) at dilution of 1:100 (40x lens).