

ASPSCR1 Rabbit Polyclonal Antibody



CAB7481

Product Information

Size:

20uL, 50uL, 100uL, 200uL

Observed MW:

80kDa

Calculated MW:

37kDa/54kDa/60kDa/69kDa

Applications:

WB IHC IF IP

Reactivity:

Human, Mouse, Rat

Protein Background

The protein encoded by this gene contains a UBX domain and interacts with glucose transporter type 4 (GLUT4). This protein is a tether, which sequesters the GLUT4 in intracellular vesicles in muscle and fat cells in the absence of insulin, and redistributes the GLUT4 to the plasma membrane within minutes of insulin stimulation. Translocation t(X;17)(p11;q25) of this gene with transcription factor TFE3 gene results in a ASPSCR1-TFE3 fusion protein in alveolar soft part sarcoma and in renal cell carcinomas. Multiple alternatively spliced transcript variants have been found.

Immunogen information

Gene ID:

79058

Uniprot

Q9BZE9

Synonyms:

ASPSCR1; ASPCR1; ASPL; ASP5; RCC17; TUG; UBXD9; UBXN9

Antibody Information

Recommended dilutions:

WB 1:500 - 1:2000 IHC 1:50

- 1:200 IF 1:50 - 1:200 IP

1:50 - 1:100

Source:

Rabbit

Isotype:

IgG

Purification:

Affinity purification

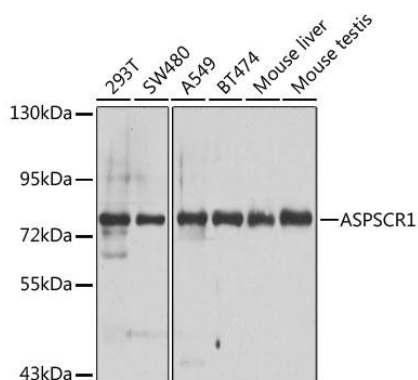
Immunogen:

Recombinant fusion protein containing a sequence corresponding to amino acids 284-553 of human ASPSCR1 (NP_076988.1).

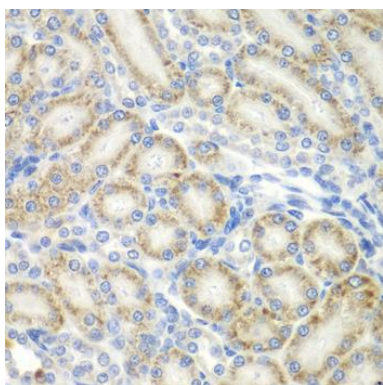
Storage:

Store at -20°C. Avoid freeze / thaw cycles. Buffer: PBS with 0.02% sodium azide, 50% glycerol, pH7.3.

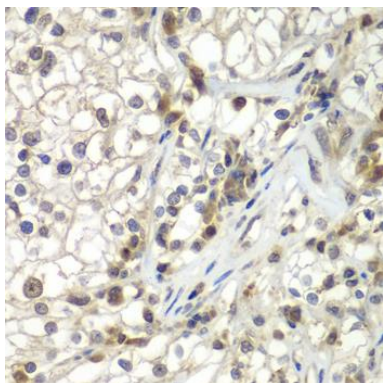
Product Images



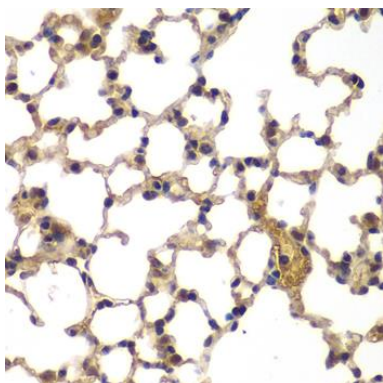
Western blot analysis of extracts of various cell lines, using ASPSCR1 antibody (CAB7481) at 1:1000 dilution. Secondary antibody: HRP Goat Anti-Rabbit IgG (H+L) (CABS014) at 1:10000 dilution. Lysates/proteins: 25ug per lane. Blocking buffer: 3% nonfat dry milk in TBST. Detection: ECL Basic Kit (CABM00020). Exposure time: 30s.



Immunohistochemistry of paraffin-embedded rat kidney using ASPSCR1 antibody (CAB7481) at dilution of 1:100 (40x lens).



Immunohistochemistry of paraffin-embedded human kidney cancer using ASPSCR1 antibody (CAB7481) at dilution of 1:100 (40x lens).



Immunohistochemistry of paraffin-embedded mouse lung using ASPSCR1 antibody (CAB7481) at dilution of 1:100 (40x lens).