

# ELF2 Rabbit Polyclonal Antibody



CAB7487

## Product Information

### Size:

20uL, 50uL, 100uL, 200uL

### Observed MW:

64kDa

### Calculated MW:

54kDa/56kDa/57kDa/62kDa/  
63kDa

### Applications:

WB

### Reactivity:

Human, Mouse

## Antibody Information

### Recommended dilutions:

WB 1:500 - 1:2000

### Source:

Rabbit

### Isotype:

IgG

### Purification:

Affinity purification

## Protein Background

### Immunogen information

#### Gene ID:

1998

#### Uniprot

Q15723

#### Synonyms:

ELF2; EU32; NERF; NERF-1A; NERF-1B; NERF-1a; b; NERF-2

#### Immunogen:

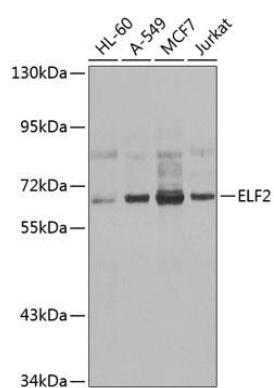
Recombinant fusion protein containing a sequence corresponding to amino acids 1-140 of human ELF2 (NP\_006865.1).

#### Storage:

Store at -20°C. Avoid freeze / thaw cycles. Buffer: PBS with 0.02% sodium azide, 50% glycerol, pH7.3.

## Product Images

---



Western blot analysis of extracts of various cell lines, using ELF2 antibody (CAB7487) at 1:1000 dilution. Secondary antibody: HRP Goat Anti-Rabbit IgG (H+L) (CABS014) at 1:10000 dilution. Lysates/proteins: 25ug per lane. Blocking buffer: 3% nonfat dry milk in TBST. Detection: ECL Basic Kit (CABM00020). Exposure time: 1s.