

UBA3 Rabbit Polyclonal Antibody



CAB7504

Product Information

Size:

20uL, 50uL, 100uL, 200uL

Observed MW:

52kDa/104kDa

Calculated MW:

50kDa/51kDa

Applications:

WB IHC

Reactivity:

Human, Mouse, Rat

Antibody Information

Recommended dilutions:

WB 1:500 - 1:2000 IHC 1:50
- 1:200

Source:

Rabbit

Isotype:

IgG

Purification:

Affinity purification

Protein Background

The modification of proteins with ubiquitin is an important cellular mechanism for targeting abnormal or short-lived proteins for degradation. Ubiquitination involves at least three classes of enzymes: ubiquitin-activating enzymes, or E1s, ubiquitin-conjugating enzymes, or E2s, and ubiquitin-protein ligases, or E3s. This gene encodes a member of the E1 ubiquitin-activating enzyme family. The encoded enzyme associates with AppBp1, an amyloid beta precursor protein binding protein, to form a heterodimer, and then the enzyme complex activates NEDD8, a ubiquitin-like protein, which regulates cell division, signaling and embryogenesis. Multiple alternatively spliced transcript variants encoding distinct isoforms have been found for this gene.

Immunogen information

Gene ID:

9039

Uniprot

Q8TBC4

Synonyms:

UBA3; NAE2; UBE1C; hUBA3

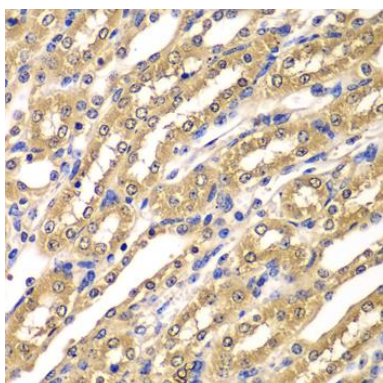
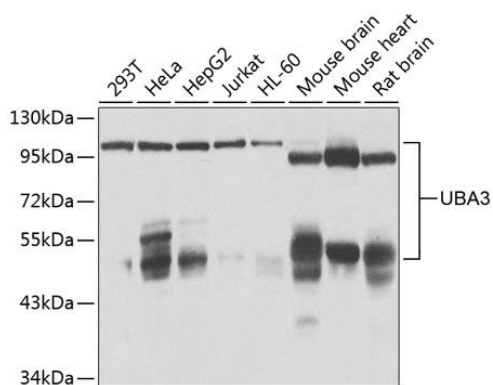
Immunogen:

Recombinant fusion protein containing a sequence corresponding to amino acids 234-463 of human UBA3 (NP_003959.3).

Storage:

Store at -20°C. Avoid freeze / thaw cycles. Buffer: PBS with 0.02% sodium azide, 50% glycerol, pH7.3.

Product Images



Western blot analysis of extracts of various cell lines, using UBA3 antibody (CAB7504) at 1:1000 dilution. Secondary antibody: HRP Goat Anti-Rabbit IgG (H+L) (CABS014) at 1:10000 dilution. Lysates/proteins: 25ug per lane. Blocking buffer: 3% nonfat dry milk in TBST. Detection: ECL Basic Kit (CABM00020). Exposure time: 10s.

Immunohistochemistry of paraffin-embedded mouse kidney using UBA3 antibody (CAB7504) at dilution of 1:100 (40x lens).