

# GOPC Rabbit Polyclonal Antibody



CAB7513

## Product Information

### Size:

20uL, 50uL, 100uL, 200uL

### Observed MW:

51kDa

### Calculated MW:

35kDa/49kDa/50kDa

### Applications:

WB IF

### Reactivity:

Human, Mouse, Rat

## Protein Background

This gene encodes a Golgi protein with a PDZ domain. The PDZ domain is globular and proteins which contain them bind other proteins through short motifs near the C-termini. Mice which are deficient in the orthologous protein have globozoospermia and are infertile. Multiple transcript variants encoding different isoforms have been found for this gene.

## Immunogen information

### Gene ID:

57120

### Uniprot

Q9HD26

### Synonyms:

GOPC; CAL; FIG; GOPC1; PIST; dJ94G16.2

## Antibody Information

### Recommended dilutions:

WB 1:500 - 1:2000 IF 1:50 - 1:200

### Source:

Rabbit

### Isotype:

IgG

### Purification:

Affinity purification

### Immunogen:

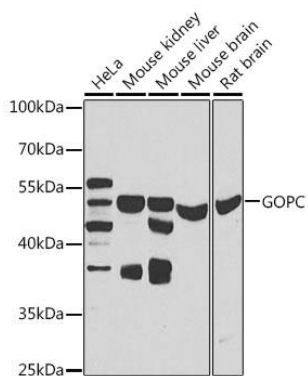
Recombinant fusion protein containing a sequence corresponding to amino acids 195-454 of human GOPC (NP\_001017408.1).

### Storage:

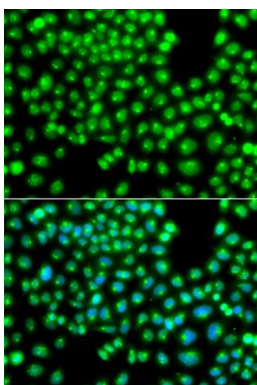
Store at -20°C. Avoid freeze / thaw cycles. Buffer: PBS with 0.02% sodium azide, 50% glycerol, pH7.3.

## Product Images

---



Western blot analysis of extracts of various cell lines, using GOPC antibody (CAB7513) at 1:1000 dilution. Secondary antibody: HRP Goat Anti-Rabbit IgG (H+L) (CABS014) at 1:10000 dilution. Lysates/proteins: 25ug per lane. Blocking buffer: 3% nonfat dry milk in TBST. Detection: ECL Basic Kit (CABM00020). Exposure time: 30s.



Immunofluorescence analysis of A549 cells using GOPC antibody (CAB7513). Blue: DAPI for nuclear staining.