

SMAD9 Rabbit Polyclonal Antibody



CAB7518

Product Information

Size:

20uL, 50uL, 100uL, 200uL

Observed MW:

45-52kDa

Calculated MW:

48kDa/52kDa

Applications:

IHC IF

Reactivity:

Human, Mouse, Rat

Antibody Information

Recommended dilutions:

IHC 1:50 - 1:200 IF 1:50 - 1:200

Source:

Rabbit

Isotype:

IgG

Purification:

Affinity purification

Protein Background

The protein encoded by this gene is a member of the SMAD family, which transduces signals from TGF-beta family members. The encoded protein is activated by bone morphogenetic proteins and interacts with SMAD4. Two transcript variants encoding different isoforms have been found for this gene.

Immunogen information

Gene ID:

4093

Uniprot

O15198

Synonyms:

SMAD9; MADH6; MADH9; PPH2; SMAD8; SMAD8/9; SMAD8A; SMAD8B

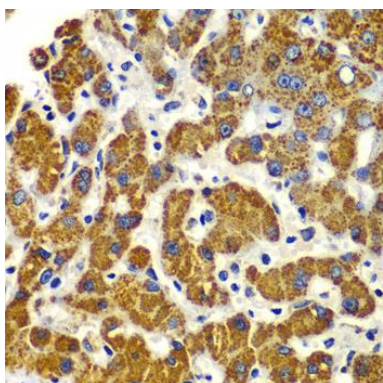
Immunogen:

Recombinant fusion protein containing a sequence corresponding to amino acids 1-300 of human SMAD9 (NP_005896.1).

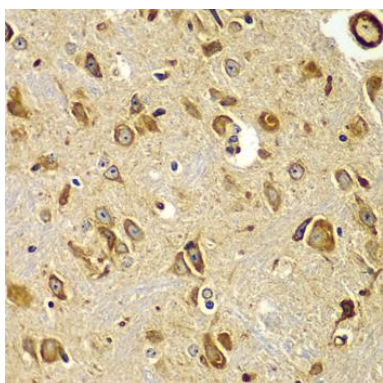
Storage:

Store at -20°C. Avoid freeze / thaw cycles. Buffer: PBS with 0.02% sodium azide, 50% glycerol, pH7.3.

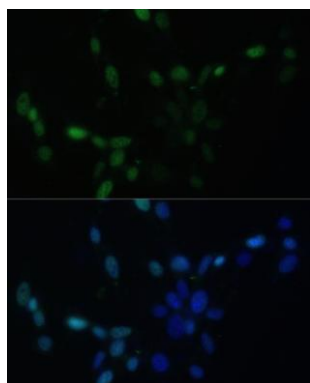
Product Images



Immunohistochemistry of paraffin-embedded human liver damage using SMAD9 antibody (CAB7518) at dilution of 1:100 (40x lens).



Immunohistochemistry of paraffin-embedded mouse brain using SMAD9 antibody (CAB7518) at dilution of 1:100 (40x lens).



Immunofluorescence analysis of NIH/3T3 cells using SMAD9 antibody (CAB7518) at dilution of 1:100. Blue: DAPI for nuclear staining.