

# ATG14 Rabbit Polyclonal Antibody



CAB7526

## Product Information

### Size:

20uL, 50uL, 100uL, 200uL

### Observed MW:

60kDa

### Calculated MW:

42kDa/55kDa

### Applications:

WB IHC IF

### Reactivity:

Human, Mouse, Rat

## Antibody Information

### Recommended dilutions:

WB 1:500 - 1:2000 IHC 1:50  
- 1:200 IF 1:50 - 1:200

### Source:

Rabbit

### Isotype:

IgG

### Purification:

Affinity purification

## Protein Background

### Immunogen information

#### Gene ID:

22863

#### Uniprot

Q6ZNE5

#### Synonyms:

ATG14; ATG14L; BARKOR; KIAA0831

#### Immunogen:

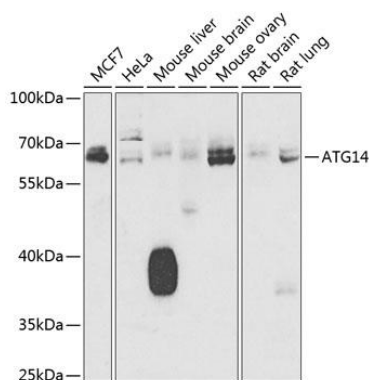
Recombinant fusion protein containing a sequence corresponding to amino acids 1-310 of human ATG14 (NP\_055739.2).

#### Storage:

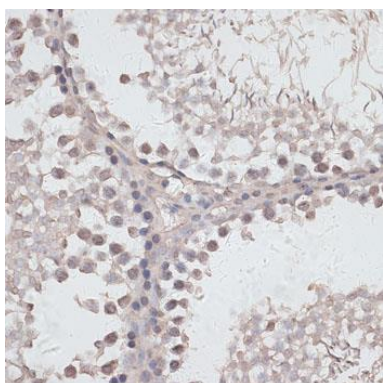
Store at -20°C. Avoid freeze / thaw cycles. Buffer: PBS with 0.02% sodium azide, 50% glycerol, pH7.3.

## Product Images

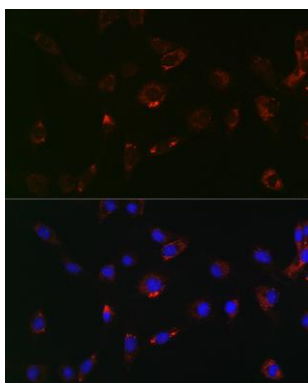
---



Western blot analysis of extracts of various cell lines, using ATG14 antibody (CAB7526) at 1:1000 dilution. Secondary antibody: HRP Goat Anti-Rabbit IgG (H+L) (CABS014) at 1:10000 dilution. Lysates/proteins: 25ug per lane. Blocking buffer: 3% nonfat dry milk in TBST. Detection: ECL Basic Kit (CABM00020). Exposure time: 90s.



Immunohistochemistry of paraffin-embedded rat testis using ATG14 antibody (CAB7526) at dilution of 1:100 (40x lens).



Immunofluorescence analysis of BALB-3T3 cells using ATG14 Rabbit pAb (CAB7526) at dilution of 1:100 (40x lens). Blue: DAPI for nuclear staining.