

ZFYVE1 Rabbit Polyclonal Antibody



CAB7527

Product Information

Size:

20uL, 50uL, 100uL, 200uL

Observed MW:

87kDa

Calculated MW:

40kDa/85kDa/87kDa

Applications:

WB IF

Reactivity:

Human

Protein Background

The FYVE domain mediates the recruitment of proteins involved in membrane trafficking and cell signaling to phosphatidylinositol 3-phosphate-containing membranes. This protein contains two zinc-binding FYVE domains in tandem and is reported to localize to the Golgi apparatus. Alternative splicing results in multiple transcript variants.

Immunogen information

Gene ID:

53349

Uniprot

Q9HBF4

Synonyms:

ZFYVE1; DFCEP1; PPP1R172; SR3; TAFF1; ZNFN2A1

Antibody Information

Recommended dilutions:

WB 1:500 - 1:2000 IF 1:50 - 1:200

Source:

Rabbit

Isotype:

IgG

Purification:

Affinity purification

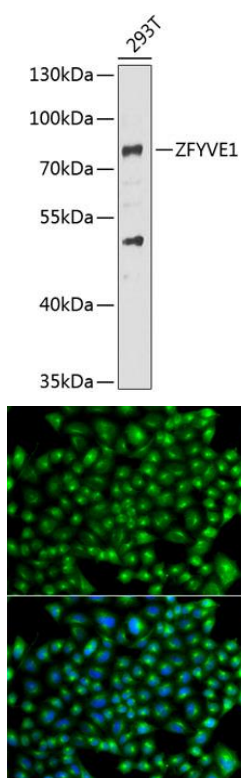
Immunogen:

Recombinant fusion protein containing a sequence corresponding to amino acids 1-280 of human ZFYVE1 (NP_067083.1).

Storage:

Store at -20°C. Avoid freeze / thaw cycles. Buffer: PBS with 0.02% sodium azide, 50% glycerol, pH7.3.

Product Images



Western blot analysis of extracts of 293T cells, using ZFYVE1 antibody (CAB7527) at 1:1000 dilution. Secondary antibody: HRP Goat Anti-Rabbit IgG (H+L) (CABS014) at 1:10000 dilution. Lysates/proteins: 25ug per lane. Blocking buffer: 3% nonfat dry milk in TBST. Detection: ECL Basic Kit (CABM00020). Exposure time: 90s.

Immunofluorescence analysis of A549 cells using ZFYVE1 antibody (CAB7527). Blue: DAPI for nuclear staining.