

ELMOD3 Rabbit Polyclonal Antibody



CAB7532

Product Information

Size:

20uL, 50uL, 100uL, 200uL

Observed MW:

38/43kDa

Calculated MW:

18kDa/20kDa/28kDa/43kDa/
44kDa

Applications:

WB

Reactivity:

Human, Mouse, Rat

Antibody Information

Recommended dilutions:

WB 1:500 - 1:2000

Source:

Rabbit

Isotype:

IgG

Purification:

Affinity purification

Protein Background

This gene encodes a member of the engulfment and cell motility family of GTPase-activating proteins that regulate Arf GTPase proteins. Members of this family are defined by a conserved engulfment and cell motility domain. In rat cochlea, the encoded protein is found in stereocilia, kinocilia and cuticular plate of developing hair cells suggesting a function for this protein in cochlear sensory cells. An allelic variant of this family has been associated with autosomal recessive nonsyndromic deafness-88 in humans. Alternative splicing results in multiple transcript variants.

Immunogen information

Gene ID:

84173

Uniprot

Q96FG2

Synonyms:

ELMOD3; DFNB88; LST3; RBED1; RBM29

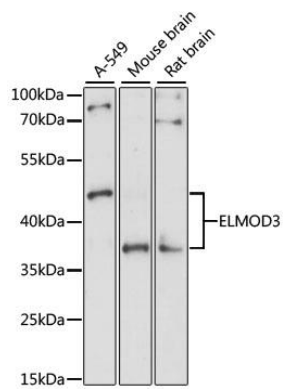
Immunogen:

Recombinant fusion protein containing a sequence corresponding to amino acids 290-381 of human ELMOD3 (NP_001128493.1).

Storage:

Store at -20°C. Avoid freeze / thaw cycles. Buffer: PBS with 0.02% sodium azide, 50% glycerol, pH7.3.

Product Images



Western blot analysis of extracts of various cell lines, using ELMOD3 antibody (CAB7532) at 1:1000 dilution. Secondary antibody: HRP Goat Anti-Rabbit IgG (H+L) (CABS014) at 1:10000 dilution. Lysates/proteins: 25ug per lane. Blocking buffer: 3% nonfat dry milk in TBST. Detection: ECL Basic Kit (CABM00020). Exposure time: 90s.