

# CBR3 Rabbit Polyclonal Antibody



CAB7545

---

## Product Information

### Size:

20uL, 50uL, 100uL, 200uL

### Observed MW:

31kDa

### Calculated MW:

30kDa

### Applications:

WB IHC IF

### Reactivity:

Human, Mouse, Rat

## Protein Background

Carbonyl reductase 3 catalyzes the reduction of a large number of biologically and pharmacologically active carbonyl compounds to their corresponding alcohols. The enzyme is classified as a monomeric NADPH-dependent oxidoreductase. CBR3 contains three exons spanning 11.2 kilobases and is closely linked to another carbonyl reductase gene - CBR1.

## Immunogen information

### Gene ID:

874

### Uniprot

O75828

### Synonyms:

CBR3; HEL-S-25; SDR21C2; hCBR3

## Antibody Information

### Recommended dilutions:

WB 1:500 - 1:2000 IHC 1:50  
- 1:200 IF 1:50 - 1:200

### Source:

Rabbit

### Isotype:

IgG

### Purification:

Affinity purification

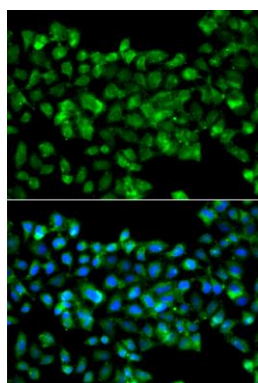
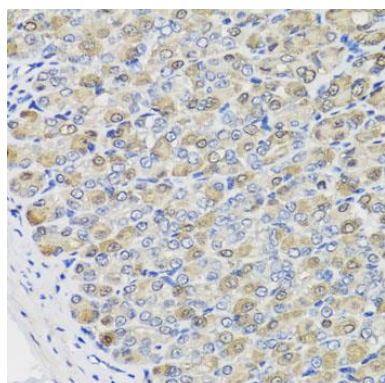
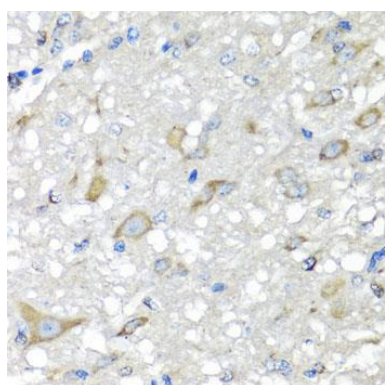
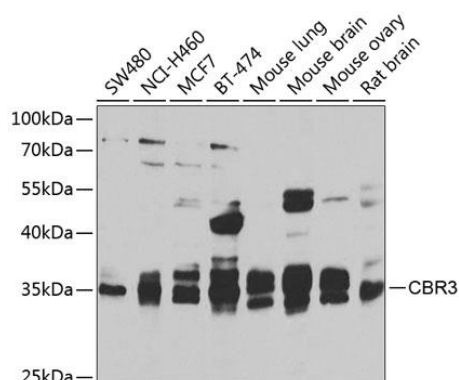
### Immunogen:

Recombinant fusion protein containing a sequence corresponding to amino acids 118-277 of human CBR3 (NP\_001227.1).

### Storage:

Store at -20°C. Avoid freeze / thaw cycles. Buffer: PBS with 0.02% sodium azide, 50% glycerol, pH7.3.

## Product Images



Western blot analysis of extracts of various cell lines, using CBR3 antibody (CAB7545) at 1:1000 dilution. Secondary antibody: HRP Goat Anti-Rabbit IgG (H+L) (CABS014) at 1:10000 dilution. Lysates/proteins: 25ug per lane. Blocking buffer: 3% nonfat dry milk in TBST. Detection: ECL Basic Kit (CABM00020). Exposure time: 30s.

Immunohistochemistry of paraffin-embedded rat brain using CBR3 antibody (CAB7545) at dilution of 1:100 (40x lens).

Immunohistochemistry of paraffin-embedded mouse stomach using CBR3 antibody (CAB7545) at dilution of 1:100 (40x lens).

Immunofluorescence analysis of A549 cells using CBR3 antibody (CAB7545). Blue: DAPI for nuclear staining.